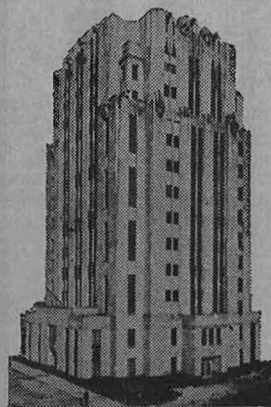


OFFICIAL DIRECTORY

1955 - 1956



MACOMB COUNTY

MICHIGAN

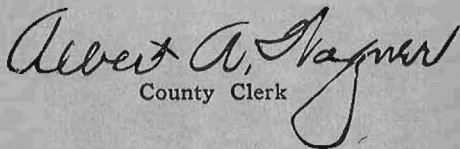
Compiled by
ALBERT A. WAGNER
County Clerk

To the Citizens of Macomb County:

In offering this booklet to the public, it is intended primarily to acquaint all citizens, young and old, with the officials and offices charged with conducting the affairs of government from national to the township and village level.

In addition, we are proud to offer something more. Appended is a condensed History of Macomb County (prepared gratis as a public service) which should prove both instructive to the student and inspiring to the adult citizen who takes pride in our service.

May we express our thanks for the historical sketch, and also for the assistance of many cooperative officials who helped to make this booklet so complete.


County Clerk

Officials of the
**FEDERAL - STATE - COUNTY ,
CITIES - VILLAGES
and
TOWNSHIPS**
in the
COUNTY OF MACOMB

1955 - 1956

MOUNT CLEMENS, MICHIGAN
County Seat

Compiled by
ALBERT A. WAGNER
County Clerk

FEDERAL OFFICERS

Dwight D. Eisenhower
President of the United States
Richard Nixon
Vice-President of the United States

UNITED STATES CONGRESS

Richard Nixon
President, U. S. Senate
Sam Rayburn
Speaker, U. S. House of Representatives
Number of U. S. Senators 96
Number of U. S. Representatives 435

PRESIDENT'S CABINET

Secretary of State
John Foster Dulles New York
Secretary of the Treasury
George M. Humphrey Ohio
Attorney General
Herbert Brownell, Jr. New York
Postmaster General
Arthur E. Summerfield Michigan
Secretary of Defense
Charles E. Wilson Michigan
Secretary of Interior
Douglas Mc Kay Oregon
Secretary of Agriculture
Ezra Taft Benson Utah
Secretary of Commerce
Sinclair Weeks Massachusetts
Secretary of Labor
James P. Mitchell New Jersey

SUPREME COURT OF UNITED STATES

Chief Justice

Earl Warren Appointed 1953

Associate Justices

Hugo L. Black Appointed 1937
Stanley F. Reed 1938
Felix Frankfurter 1939
William O. Douglas 1939
Harold H. Burton 1945
Tom C. Clarke 1949
Sherman Minton 1949
John Marshall Harlan 1954

UNITED STATES SENATORS

Charles E. Potter Cheboygan
Patrick V. Mc Namara Detroit

REPRESENTATIVE IN CONGRESS

Jesse P. Wolcott7th District..... Port Huron

STATE OFFICERS

GOVERNOR

G. Mennen Williams

LIEUTENANT GOVERNOR

Philip A. Hart

SECRETARY OF STATE

James M. Hare

ATTORNEY GENERAL

Thomas M. Kavanaugh

STATE TREASURER

Sanford A. Brown

AUDITOR GENERAL

Victor Targonski

SUPERINTENDENT OF PUBLIC INSTRUCTION

Clair L. Taylor

STATE HIGHWAY COMMISSIONER

Charles M. Ziegler

JUDICIARY

Supreme Court of Michigan

| | Term Expires |
|-------------------------------|---------------|
| Leland W. Carr | Dec. 31, 1955 |
| Henry M. Butzel | Dec. 31, 1955 |
| Talbot Smith | Dec. 31, 1956 |
| Edward M. Sharpe | Dec. 31, 1957 |
| Emerson R. Boyles | Dec. 31, 1959 |
| Neil E. Reid | Dec. 31, 1959 |
| John R. Dethmers | Dec. 31, 1961 |
| Harry F. Kelly | Dec. 31, 1961 |
| Hugh H. Carpenter | Clerk |
| Leland W. Carr (Elect) | Dec. 31, 1963 |
| Eugene F. Black (Elect) | Dec. 31, 1963 |

STATE SENATOR, 11th District

Fred Nicholson Warren

STATE HOUSE OF REPRESENTATIVES

First District

William Romano Van Dyke

Second District

John T. Bowman Roseville

Third District

George C. Steeh Mt. Clemens

President of Senate Philip A. Hart

Speaker of the House
of Representatives Wade Van Valkenburg

Number of Senators 34

Number of Representatives 110

CIRCUIT COURT OFFICERS

16th Judicial Circuit

James E. Spier Circuit Judge
Alton H. Noe Circuit Judge
Albert A. Wagner Clerk of Circuit Court
Dorothy Rosso Chief Deputy Clerk
Elmore E. Lester Assignment Clerk
Betty Cron Court Clerk
Catherine Irwin Court Clerk
Cecil A. Byers Prosecuting Attorney
William C. Butler Chief Ass't Prosecutor
Robert G. Edmonson Ass't Prosecutor
Robert S. McKenzie Ass't Prosecutor
Bruce L. Monks Ass't Prosecutor
Roy W. Rogensues Ass't Prosecutor
Daniel Cosmenco Ass't Prosecutor
Alfred A. Blomberg Civil Counsel
Lorraine Nicholson Court Reporter
Daniel Moreno Court Reporter
Harley Ensign Sheriff

CIRCUIT COURT OFFICERS (Cont'd)

Clarence Shirey Court Officer
Edward J. Harder Court Officer
Guy L. Brown, Jr. Probation Officer
Marybelle Baker Friend of the Court
William H. Nunneley Circuit Court Comm'r
J. Russell LaBarge Circuit Court Comm'r

TERMS OF CIRCUIT COURT

Second Monday in January, April,
June, August and October.

COUNTY OFFICERS

Circuit Judge James E. Spier
Circuit Judge Alton H. Noe
Probate Judge Joseph V. Trombly
Probate Judge Donald J. Parent
County Clerk Albert A. Wagner
Prosecuting Attorney Cecil A. Byers
Sheriff Harley Ensign
County Treasurer Lynn Whalen
Register of Deeds Aaron Burr
Drain Commissioner Frank Lohr
Coroner Clifford H. Read
Coroner Raymond G. Markle, D.O.
Circuit Court Comm'r Wm. H. Nunneley
Circuit Court Comm'r J. Russell LaBarge
County Controller Sherwood J. Bennett
Probation Officer Guy L. Brown, Jr.
Ass't Probation Officer Harry L. Haller
County Health Director.....Oscar D. Stryker, M.D.
County Sanitary Engineer Merlin A. Damon
Supervisor of Nursing Marie Presley, R.N.
County Agent Martin H. Walkenhorst
County Agricultural Agent..... William Rupp
Commissioner of Schools Harold LeFevre
County Dog Warden Walter Ploetz
Probate Registrar Nelson Zott

COUNTY OFFICERS (Cont'd)

County Librarian Dorothy E. Hiatt
Friend of the Court Marybelle Baker
Property Surveyor Arthur D. Roese
Civil Defense Director Arthur J. Wendt

BOARD OF SUPERVISORS

Chairman Bernard A. Kalahar
Vice Chairman Harold Lindsey
Clerk Albert A. Wagner
Civil Counsel Alfred A. Blomberg
Sergeant at Arms Keith Bovenschen

Armada Township W. A. Toles
Bruce John M. Bailey
Chesterfield Keith Bovenschen
Clinton Jerome DeVisscher
Erin Frank Biehl
Harrison Ralph E. Beaufait
Lake Harry Garland
Lenox Frank Lemmon
Macomb Paul Bock
Ray J. Nellis Clark
Richmond Arthur J. Rowley
Shelby Steve Skuita
Sterling Arthur Priehs
Warren Arthur J. Miller
Washington R. Eugene Inwood
City of Centerline Bernard A. Kalahar
 Alex Schoenherr
 Bernard Wolf, Sr.
 Wilbert F. Lundy
City of East Detroit Carl Weymouth
 Bert Leidecker
 Mildred Stark
 Robert Doen
 Howard Ledbetter

SUPERVISORS (Cont'd)

City of Mount Clemens Harold Lindsey
 Hugh H. Neale
 Lawrence Oehmke
 Ruth Westover
 Gerald Lonergan
City of Memphis James Phillips
City of New Baltimore Arthur Shorkey
 Kenneth W. Hill
City of St. Clair Shores Thomas W. Welsh
 Hugh R. Dodge
 Adrian A. Lingemann
 Milton Sicklesteel
 John Yoe
City of Utica Howard Crissman
 Robert Havel

MACOMB COUNTY BOARD OF SUPERVISORS COMMITTEES FOR 1955 - 1956

CHAIRMAN — Bernard A. Kalahar
VICE-CHAIRMAN — Harold Lindsey
CLERK — Albert A. Wagner

ATTORNEY — Alfred A. Blomberg

AGRICULTURE: Bock, Clark, Lemmon, Rowley, Inwood, Priehs, Toles, Bailey.

APPORTIONMENT: Rowley, Bovenschen, Lonergan, Bock, Leidecker, Wolf, Havel.

APPROPRIATIONS: Clark, Dodge, Priehs, Bock, Lindsey, Phillips, Bovenschen, Bailey.

BUILDING: Lundy, Crissman, Weymouth, Lemmon, Bovenschen, Biehl, Sicklesteel, Shorkey, Rowley, Oehmke, Clark.

BUDGET: Sicklesteel, Miller, Biehl, Lundy, Lindsey, Hill, Lemmon, Inwood, Doen, DeVisscher.

COMMITTEES (Cont'd)

DOG: Prichs, Weymouth, Toles, Bock, Bailey, Clark, Wolf, Westover.

DRAIN: Schoenherr, Biehl, Miller, Bailey, Welsh, Rowley, Stark, Bovenschen, Toles, Lonergan.

EQUALIZATION: Lindsey, Hill, Biehl, Miller, Lingemann, Lundy, Ledbetter, Lemmon, Havel, Inwood.

FINANCE: Biehl, Oehmke, Miller, Clark, Schoenherr, Dodge, DeVisscher, Ledbetter, Skula, Inwood.

INDUSTRIAL & PUBLIC RELATIONS: Stark, Crissman, Dodge, Miller, Lemmon, Neale, Shorkey, Phillips.

LEGISLATION: Weymouth, Neale, Hill, Skula, Biehl, Inwood, Yoc.

REJECTED TAX: Westover, Lundy, Prichs, Havel, Shorkey, Sicklesteel, Beaufait.

RESOLUTIONS: Neale, Hill, Weymouth, Bailey, Garland, Inwood, Yoc.

ROADS: Lemmon, Toles, Shorkey, Oehmke, Welsh, Skula, Rowley, Miller, Leidecker, Bovenschen.

RADIO: Leidecker, Biehl, Lemmon, Schoenherr, Miller, Dodge, Westover.

SHERIFF: Oehmke, Hill, Schoenherr, Toles, Miller, Crissman, Bovenschen, Rowley, Ledbetter, Welsh.

TOWNSHIP TAX: Inwood, Prichs, Bock, Shorkey, Wolf, Garland, Rowley, DeVisscher.

WELFARE: Miller, Lingemann, Biehl, Hill, Toles, Rowley, Wolf, Doen, Skula, Westover.

TREASURER: Toles, Welsh, Prichs, Phillips, Bailey, Leidecker, Havel.

COMMITTEES (Cont'd)

JUDICIARY: Hill, Neale, Weymouth, Clark, Yoc, Lonergan, Wolf, Toles, Stark, Doen.

DEFENSE: Havel, Lindsey, Sicklesteel, Miller, Stark, DeVisscher, Beaufait.

REGISTER OF DEEDS: Lingemann, Oehmke, Clark, Bailey, Inwood, Havel, Beaufait, Phillips.

CO-ORDINATING ZONING: Miller, Bovenschen, Lindsey.

WATER & SEWER INTER-COUNTY: Dodge, Miller, Stark, Crissman, Lindsey, Schoenherr, Biehl, Hill, Bovenschen.

SERGEANT AT ARMS: Bovenschen.

NOTE: The first name on above committees is the respective chairman thereof, and in the absence thereof the second man acts, and likewise in the absence of the first two, the third man acts.

MACOMB COUNTY BOARD OF CANVASSERS

| | |
|--------------------------|---------------|
| Leslie Baumgartner | Roseville |
| Harold Donaldson | Mount Clemens |
| Louis Luchtman | Washington |
| Albert A. Wagner | Mount Clemens |

COUNTY TAX ALLOCATION BOARD

| | |
|------------------------------------|------------------|
| William H. Nunneley, Chairman | Mt. Clemens |
| Frank Biehl | Roseville |
| Harold LeFevre | East Detroit |
| Arthur J. Miller | Warren |
| Thomas W. Welsh | St. Clair Shores |
| Lynn Whalen | Roseville |
| Albert A. Wagner, Clerk | Mount Clemens |

SOCIAL WELFARE COMMISSION

Mark Roose Chairman
Grover J. Powell Vice-Chairman
Edward J. Gallagher Member
Harry R. Cahill Secretary & Director

ELECTION COMMISSION

Joseph V. Trombly Probate Judge
Lynn Whalen County Treasurer
Albert A. Wagner County Clerk

PLAT BOARD

Aaron Burr Register of Deeds
Lynn Whalen County Treasurer
Albert A. Wagner County Clerk
Frank Lohr Drain Commissioner

COUNTY HEALTH DEPARTMENT

Oscar D. Stryker, M.D. Director
Merlin A. Damon Sanitary Engineer
Marie Presley, R. N. Supervisor of Nursing
Howard Rosso Business Manager

COUNTY BOARD OF HEALTH

Kenneth W. Hill New Baltimore
Frank Biehl Roseville
Philip T. Mulligan, M.D. Mt. Clemens
Grover J. Powell Washington
Lyle Rosso Mt. Clemens

CONCEALED WEAPONS LICENSING BOARD

Cecil A. Byers Prosecuting Attorney
Harley Ensign Sheriff
Sgt. Claude Cook Michigan State Police
Albert A. Wagner County Clerk

COUNTY SCHOOL BOARD

Kenneth W. Hill, President New Baltimore
Glenn Peters, Vice-President Mt. Clemens
Keith Bovenschen New Baltimore

COUNTY SCHOOL BOARD (Cont'd)

Allen Rush Romeo
Fred McArthur Mt. Clemens
Harold LeFevre, Secretary East Detroit

COUNTY LIBRARY BOARD

B. A. Kalahar, Chairman Centerline
Paul Cousino Warren
Harold LeFevre East Detroit
Marjorie Montgomery Armada
Arthur Rowley Memphis

EMPLOYEES RETIREMENT COMMISSION

Harry Schwaberow, Chairman Mt. Clemens
Frank Biehl Roseville
Guy L. Brown, Jr. Mt. Clemens
Roy Connor Armada
Arthur E. Harm New Haven
B. A. Kalahar Centerline
Milton Sicklesteel St. Clair Shores
Sherwood J. Bennett, Secretary Mt. Clemens

COUNTY ROAD COMMISSION

Roy Connor, Chairman Armada
William E. Malow, Vice-Chairman Utica
Ernest W. McCollom, Comm'r St. Clair Shores
George H. Klein, Engineer Mt. Clemens
Thomas A. Babcock, Secretary Mt. Clemens

NATURALIZATION

Final Hearings on Petitions on 4th Wednesday of January, April, June and November.

COUNTY EVALUATION

| | |
|------------|------------------|
| 1950 | \$186,161,488.00 |
| 1951 | 210,772,713.00 |
| 1952 | 249,603,756.00 |
| 1953 | 287,558,286.00 |
| 1954 | 335,958,377.00 |
| 1955 | 395,107,690.00 |

**OFFICIALS OF THE
CITY OF MOUNT CLEMENS**

Mayor Harold Lindsey
 City Manager Robert D. Heitsch
 Commissioners Ray Brandenburg
 Spencer Fentou
 John Gillett
 Dr. Richard H. Millar
 Lawrence Oehmke
 Ruth Westover
 City Clerk Frederick Soule
 Deputy City Clerk Emmett Quinn
 City Treasurer Helen E. Miller
 City Assessor Gerald J. Lonergan
 City Attorney
 City Engineer E. L. Pettingill
 Supt. of Water Wks. & Sewers Harry McEntee
 Supt. of Filtration Robert E. Hanson
 Chief of Police Philip H. Oakey
 Chief of Fire Department Clayton E. DuBay
 Health Officer Dr. Osear Stryker
 Supt. of Streets and Parks Joseph F. Gardner
 Director of Recreation Elroy Richter
 Electrical Inspector Stanley E. Prevost
 Plumbing Inspector Edward Hundt
 Board of Review Isaac Hartung
 Rainie Howard
 Elizabeth Golden
 Municipal Judge Frank E. Howard
 Associate Municipal Judge Frank E. Jeannette
 Constable Mrs. Kathryn Miller
 Dog Warden George Reed

**OFFICIALS OF THE
CITY OF CENTERLINE**

Mayor A. G. Hazen
 Councilmen Alex M. Schoenherr
 Carl J. Blahnik
 Roland J. Rinke
 George Vlach
 Clerk & Treasurer Wm. Steinhaus
 Police Chief Dennis R. Frazier
 Fire Chief Nelson C. Bruechert
 Assessor W. F. Lundy
 Supervisors Alex M. Schoenherr
 Bernard A. Kalahar
 Bernard Wolf
 W. F. Lundy
 Justice of the Peace Raymond R. Grubba
 Recreation Director Tom Pounder
 Health Officer Dr. James W Bryce

**OFFICIALS OF THE
CITY OF EAST DETROIT**

Mayor Aloysius L. Kapelczak
 City Manager Charles H. Beaubien
 City Clerk Charles H. Beaubien
 City Treasurer Esley J. Rausch
 City Assessor Howard L. Ledbetter
 City Attorney Carl Weymouth
 Police Chief Lyman Eckhardt
 Public Works Supt. Charles Paternoster
 Electrical Inspector Robert J. Kern
 Plumbing Inspector Frederick Walther
 Building Inspector Paul F. Linenger
 Health Officer Dr. Oscar D. Stryker
 Fire Chief August Zado
 Constable Henry C. Hauss
 Constable Rudolph Hauss

EAST DETROIT (Cont'd)

Justice of the Peace Harold H. Heins
Justice of the Peace John J. McPherson
Supervisors Howard L. Ledbetter
 Carl Weymouth
 Bert Leidcker
 Robert Doen
 Mildred Stark
Councilmen James E. Anderson
 William J. Hudson
 Beulah J. Kantner
 George S. Stone, Sr.

OFFICIALS OF THE CITY OF MEMPHIS

Mayor Clair F. Fierstine, Jr.
Clerk A. J. Pearsall
Treasurer Harold B. Fries
Councilmen Albert Priestap
 Harold Gruneisen
 Thomas Conner
 Robert Schuster
 Carl Koppinger
 Ernest Kesner
Justice of the Peace Michael Bartholomew
Justice of the Peace A. J. Pearsall
Supervisor James Phillips

OFFICIALS OF THE CITY OF NEW BALTIMORE

Mayor Arthur P. Shorkey
Clerk Grace C. Balfour
Treasurer Irvin Fritz
Assessor Frank J. Smith
City Superintendent Andrew Meldrum
Chief of Police Frank A. Dolecki

NEW BALTIMORE (Cont'd)

Water Commissioner Karl Schwanbeck
Attorney Kenneth W. Hill
Supervisors Arthur Shorkey
 Kenneth W. Hill
Fire Chief Lloyd Reck
Councilmen Earl F. Clowes
 Frank Maskey
 Leo Niebauer
 Herman Stafforst
 Vernor Allard
 Philip Henderson

OFFICIALS OF THE CITY OF ST. CLAIR SHORES

Mayor Thomas S. Welsh
City Manager Adrian A. Lingemann
Councilmen Milton Sicklesteel
 Douglas Taylor
 Hugh R. Dodge
 Frank Maison
 Yale McIntyre
 J. Gerald Wetzel
Clerk D. J. Harm
Treasurer Mrs. Lora L. Boye
Assessor Adrian A. Lingemann
Attorney John Yoe
Police Chief Harvey E. Champine
Fire Chief Philip A. Eckhout
Engineer George Koopman
Supt. Public Works Ed Kurtzhals
Supt. Water Louis H. Swartz
Recreation Director George Kaufman
Civil Defense Director Charles Dederich
Health Officer Dr. Oscar D. Stryker

HARRISON

Supervisor — Ralph E. Beaufait Mt. Clemens
Clerk — Howard W. Phillips Mt. Clemens
Treasurer — William C. Tegeder Mt. Clemens
Trustee — Carl H. Jobse Mt. Clemens
Trustee — Hiram F. Stroup Mt. Clemens

LAKE

Supervisor — Harry Garland Grosse Pointe
Clerk — Thomas E. Loughlin Grosse Pointe
Treasurer — Jay L. Hammen Grosse Pointe

LENOX

Supervisor — Frank Lemmon New Haven
Clerk — G. A. Schultz Richmond
Treasurer — Edward F. Beier Richmond
Trustee — E. Buel Priestap Richmond
Trustee — Elmer Hartwig New Haven

MACOMB

Supervisor — Paul Bock Mt. Clemens
Clerk — Edgar Beyerlein Mt. Clemens
Treasurer — Theodore Leyer Utica
Trustee — Fred Rohrbeck Utica
Trustee — Russell Koss Mt. Clemens

RAY

Supervisor — J. Nellis Clark Romeo
Clerk — Fred L. Diener Washington
Treasurer — Harriet Smith Romeo
Trustee — George Whiting Washington
Trustee — John Grader Washington

RICHMOND

Supervisor — W. Arthur Rowley Richmond
Clerk — Howard H. Bauer Richmond
Treasurer — John Joseph Richmond
Trustee — Paul Russ Richmond
Trustee — Vern McConnell Memphis

SHELBY

Supervisor — Steve Skula Utica
Clerk — Lorin Evans Utica
Treasurer — DeWitt Helferich Rochester
Trustee — Joseph Boardman Utica
Trustee — Patrick Earles Utica

STERLING

Supervisor — Arthur Priehs Fraser
Clerk — John Wright Utica
Treasurer — Otto Maas Utica
Trustee — Louis Schoenherr Fraser
Trustee — Ailred Murphy Fraser

WARREN CHARTER TOWNSHIP

Supervisor — Arthur J. Miller Warren
Clerk — Hildegard M. Lowe Van Dyke
Treasurer — William Shaw East Detroit
Trustee — William Allen Van Dyke
Trustee — Paul Puzzuoli Van Dyke
Trustee — John J. Dunn, Sr. Van Dyke
Trustee — Louis Kelsey Van Dyke

WASHINGTON

Supervisor — R. Eugene Inwood Romeo
Clerk — Harold R. Masters Washington
Treasurer — William Oming Romeo
Trustee — Charles Curtis Washington
Trustee — Frank Wilcox Romeo

VILLAGE OFFICERS

ARMADA

President George Holt
Clerk Martin Montgomery
Treasurer Carl Plauman

FRASER

President Edgar A. Beck
Clerk Richard E. Nicolai
Treasurer G. Roland Stumpf

NEW HAVEN

President Walter W. Willert
Clerk A. J. Bennett
Treasurer Helen Adelaide Bates

RICHMOND

President Leslie C. Dittman
Clerk Karl N. Hirt
Treasurer Grace Ferguson

ROMEO

President Philip M. Stone
Clerk William Oming
Treasurer Grace R. McKay

ROSEVILLE

President Glen Alsip
Clerk Robert J. Nunn
Treasurer August H. Peters

WARREN

President George Pagels
Clerk William T. Holmes
Treasurer Ray F. Lutz

HISTORY of MACOMB COUNTY

By Desmond A. Arnsby

The Daily Monitor-Leader, Mount Clemens

The grim visages of Indians, and the rugged features of hardy pioneers gazing down in stony calm from the pinnales of a million dollar Macomb County Building, symbolize 175 years of recorded history in this rich rural and urban area.

Once the happy hunting and fishing grounds of the Pottowattamies, the Ottawas, the Wyandottes and the Chippewas — and often their skirmishing place with the earliest settlers — the County of Macomb now belongs to the titans and workers of industry, the chieftains and clerks of business and those who wrest nature's bounty from the soil.

Co-owners are the more than 250,000 people who call it home; old and new Americans who enjoy Macomb County's living, culture, education, and recreation.

But long before Indians, pioneers or moderns existed, Macomb County was a part of the basin of glacial lakes which were the forerunners of the Great Lakes.

In this glacial period, the Mount Clemens of today was several hundred feet under water, possibly to a point halfway up the present County Building.

All but the northwest portion of Macomb County was a glacial lake, or a succession of gradually receding lakes that have left their record clear for geologists to read.

Romeo was the highest point of land. It doubtless emerged to face the silent, glacial

world uncounted thousands of years before such places as St. Clair Shores, Roseville, East Detroit and Centerline were uncovered.

The gradual disappearance of the glaciers left their imprint in deep grooves which, until flood and erosion of recent years practically obliterated them, could still be "read" by experts along the banks of the Clinton River and in other places.

On their slow, grinding descent to the lower areas that are now our lakes, these icy masses gouged out the clays of the glacial drifts, leaving still-evident ridges whose names have been applied to roads and landmarks.

They left for posterity a partly-flat and partly-undulating terrain, much of it clay on bedrock, surmounted by successive and deep deposits of gravel and sand formations. The West Utica area is a typical example of such deposits.

As the glacial water runoff increased, the varying stages of the level of the lake (St. Clair) left a series of beaches which have been catalogued by geologists.

The earliest discovered lake levels, characterized by distinct stages of gravel, coarse sand and fine sand, and extending well out from the lake-shore, were those of Lakes Whittlessey and Warren. Later, and closer to the present shoreline, were Lakes Elkton and Algonquin.

These latter lakes receded at Mount Clemens between the river and the lake to the east.

Lake Elkton left its beach marks along the east side of Gratiot Avenue in Mount Clemens — a sharp decline still evident from Gratiot to the river banks.

Lake Algonquin's ancient sands may be found in Harrison and Clinton Townships, east and south of Harper and Crocker.

Today, only the geologists can interpret this primeval story in the places civilization has left undisturbed by bulldozers and uncovered by concrete.

For the purpose of the record it might be well to summarize the evolution of Macomb County from territorial days to the present:

When Wayne County was established as a county in Michigan Territory in 1815, it included all that part of Michigan to which the Indian title had been extinguished, including our present Macomb County. Prior to that time (in 1805), the territorial government had been organized in Detroit under Gen. William Hull, the first governor, and it was he whose signature in 1807 voided Indian land titles.

By proclamation of Gov. Lewis Cass, on Jan. 15, 1818, all land ceded to the United States by the several Indian tribes from Maumee to White Rock was formed into the County of Macomb. (See Terr. Laws Vol 2, Page 796).

William Brown, Henry J. Hunt and Conrad V. Ten Eyck were named commissioners to ascertain the most eligible site for the seat of justice. On March 11, 1818, they designated Mount Clemens, then on the Huron River, as the county seat. (Terr. Laws Vol. 3 Page 24)

On May 4, 1818, \$400 was appropriated by the territorial legislature to aid in the erection of a courthouse and jail, which like other structures in the settlement, was a log building. (Terr. Laws, Vol. 2, Page 129)

Macomb County was the third county organized in Michigan, Wayne being organized in 1796 and Monroe in 1817.

Contradicting nature's routines, Macomb County started life as a veritable giant.

In 1818, at the time of its organization, Macomb County occupied the space now taken by the whole of Livingston, Oakland, St. Clair and Lapeer Counties (and of course, the whole of Macomb) and most of Sanilac, Shiawassee, Genesee and Ingham Counties, and a small part of Huron, Tuscola and Saginaw Counties as we know them today.

By an executive proclamation made April 8, 1818, a month after the county seat was established, Gov. Cass divided this huge "county" into two townships. (Terr. Laws Vol 2, Page 797)

All of Macomb County which lay north of a line drawn due west from the mouth of Swan Creek was called St. Clair Township, and the land south of the line was called Huron Township.

On August 12, 1818, the Township of Harrison was formed from territory within the Township of Huron (Terr. Laws Vol. 2, Page 797), the new Harrison area being roughly the space, size and location of what we now call Macomb County. (It might be said that Macomb was first called Harrison.)

It was on Jan. 12, 1819, that the tremendous area of Macomb County was first lessened by the laying out of Oakland County. This was proclaimed in 1819, but did not take effect until Jan. 1, 1823. (Terr. Laws Vol 2., Page 798-9)

Perry Township was organized also on Jan. 12, 1819 (same reference) out of the Lapeer Genesee area of Macomb. On March 28, 1820, St. Clair County was formed. (Terr Laws Vol. 2. Page 200) and with this subtraction from the once huge territory, Macomb County was reduced to the smallest extent in its history.

Two years later, Sept. 10, 1822, Gov. Cass by

proclamation re-established the boundaries of Macomb County, adding small amounts of territory at various points.

On July 17, 1824, the name of the Huron River was changed to the Clinton and in the same year, Huron Township, occupying extensively the district now often called "South Macomb" was changed to Clinton Township.

On April 12, 1827, a Legislative Act was passed dividing Macomb County into five townships: Harrison, Clinton, Shelby, Washington and Ray. (Terr. Laws Vol. 2, Pages 478-9)

In 1832 Ray Township was greatly enlarged to the east, embracing an area later to become Macomb, Richmond and Lenox Townships - the section covered by the latter three (prior to 1832) being part of St. Clair County.

On March 9, 1833, the northern half of Washington Township was formed into a new township named Bruce. (Terr. Laws Vol. 3, Page 983)

On April 22, 1833, the northern part of Ray Township was formed into Armada Township, or "Armada" as most of the early map-makers and writers termed it. (Terr. Laws Vol. 3, Page 1, 124).

On March 1, 1834, Macomb Township was organized out of part of Clinton and Harrison. Ray Township was enlarged from its base line eastward to lop off the entire upper part of Harrison Township (which took in all of what is now Lenox Township). (Terr. Laws Vol. 3, Page 1, 275).

On March 11, 1835, the lower part of Shelby Township was formed into a new township called Jefferson, where Sterling township lies today. (Terr. Laws Vol. 3, Page 1, 368).

By an act passed March 11, 1837, Hickory and Orange Townships were formed in the lower section of Clinton Township, which until Jefferson was formed was actually the original "South Macomb." (Laws of Michigan, 1837, Page 41).

The Township of Lenox was formed from the east part of Ray Township on March 20, 1837. (Laws of Michigan 1837, Page 140).

The village of Mount Clemens enjoyed the vague distinction of being incorporated twice. The first time, March 13, 1837 (Laws of Michigan, 1837, Page 61), was considered effective until some years later legal error was discovered in the proceedings. The community was then properly incorporated on April 4, 1851.

On March 6, 1838, legislative acts created the Township of Richmond from the east portion of Armada Township, and also changed the name of Jefferson to Sterling Township. (Laws of Michigan, 1838, Pages 78 and 83).

An act of April 2, 1838, removed some territory from Orange (Erin and Lake) and added it to Hickory (Warren Township), and also changed the name of Hickory to Aba Township. (Laws of Michigan, 1837-8, Page 158).

In 1840 came the historic debate in the Legislature concerning the rivalry of Romeo for Mount Clemens' county seat; a move that left the situation unchanged. Utica also contended for the county seat. It was also in 1840, following the debates, that a new courthouse was voted for Mount Clemens to replace the log structure which formerly existed. (The county seat dispute continued intermittently up to 1879).

By an act approved March 26, 1839, the name Aba Township (only one year old) was changed to Warren. And on Feb. 26, 1842, Macomb

Township was divided into two equal parts to form Macomb and Chesterfield Townships.

In 1842, Section 36 was taken from Warren Township and added to Orange Township. On March 9, 1843 (Laws of Michigan, 1843, Page 198), the name of Orange was changed to Erin — a defiant gesture demanded by South of Ireland settlers.

The last remaining straightening of Township lines took place under authority of Act. 172, 1865 when Section 36 was detached from Erin and restored to Warren Township.

Thus — with the subsequent establishment of prospering villages and cities — we attain the Macomb County of today: 15 townships, seven villages, seven cities and a dozen well populated hamlets which are villages and cities in the making.

In the latter connection, the Village of Roseville, with close to 27,000 population within its corporate limits, is a typical example. Village officials predict it will become a city shortly.

The largest incorporation, that of St. Clair Shores during January, 1951, represents a thriving lakeshore city of almost 31,000 people where the original French hunters, fishermen and trappers established some 175 years ago.

But mere history as recorded in legislative acts is actually far from the true picture of Macomb County's historic past.

Even though the termination of the revolutionary war in 1783 established the English-American boundary line on the lake channel, English control continued in this area until 1796.

At that time under Jay's treaty, Detroit and other outposts south and west of the lakes were formally surrendered to the American forces.

So actually, it was 1796 before Macomb County became part of the United States.

It was about 1796 that there was projected into this half-Indian, half-French settlement on the Huron River the energy and civic-mindedness of a man, Christian Clemens — whose name is perpetuated in the county seat. A Detroitier, he undertook a surveying trip for Gov. Cass, and sizing up the slightly elevated townsite that is now a city, he later purchased large private claims and called the settlement Mount Clemens. He built the first house on the westerly side of what is today North Broadway.

From 1818 to 1826 Macomb County was governed by a board of commissioners. The Board of Supervisors did not come into existence until 1827. In 1837 the county returned to the commission system, but by 1842 it had again reverted to a supervisors' government.

The amount of governmental and legislative transactions covered by supervisors in those days may be gauged from the fact that the entire county proceedings from 1827 to 1837 required a book of only 55 pages written in longhand. (The minutes of one average meeting today, if written in longhand, would require this space.)

Meetings of the county board since the beginning have always been at the county seat in Mount Clemens; from log cabin to million-dollar County Building.

There was only one exception to this record. During the early 1930's—the depression era—while the new County Building was under construction, the county board met for more than a year in the basement community room of the Mount Clemens Savings Bank.

Mount Clemens underwent a vigorous stimulus in the middle 1830's (but one that bogged

down in a state financial panic in the 1840's). The success of the Erie Canal: launching of the ill-fated Clinton-Kalamazoo Canal, and heavy Eastern settlement all contributed to put Mount Clemens on its economic feet. The community was platted and developed, with small businesses and industries being established in the downtown area as we know it.

In the 1850's attempts were made by local promoters to find oil in the black, ill smelling waters that were often found by well-diggers. But the oil promotions failed. Subsequently the flow was densely impregnated with salt, so promoters changed their plans and by evaporating the waters met with fair success in producing a low grade salt.

The story has been told and re-told of an old, rheumatic horse, unfit for work, that wandered under one of the dripping, elevated salt tanks used in the process. The animal allowed the mineral water to saturate its hide, even rolling in the muddy puddles on the ground.

Within a short time, old settlers recall, the nag was galloping around with a new lease on life.

Health seeking residents timidly tried bathing in the waters, with excellent results. In 1875 a small bathhouse was built, and the rest of the story is history — a million dollar industry that attracts patrons from every state and country.

About the same time as the mineral bath industry got under way to a humble start, the floral industry came into being, largely through the Breitmeyer family. Today its valuation is in the millions of dollars and a half-dozen greenhouses annually produce blooms in the tens of millions for shipment throughout the United States.

The heavier industries play a major role in Mount Clemens' productivity: the long-established Mount Clemens Pottery, Ironrite Ironer, Inc., and the Electromaster Division of Philco are the "Big Three" of a thriving family of manufacturing concerns.

But no record should be closed without particular mention of the growing might of South Macomb as an industrial giant, particularly Warren Township, once known by the rustic name of "Hickory." Warren Township's industry now flourishing, reached its proudest height during World War II when it was termed "The Heart of the Arsenal of Democracy."

Two fully-equipped war plants estimated in value at \$100,000,000 each were the major establishments, surrounded by a diadem of lesser, but no less vigorous factories. They produced a tremendous share of the weapons of war, and today most of them are forging the plowshares of peace, but ready, at an instant's notice, to speed arms and armaments to wherever America might need them.

Warren Township's original settlement of war plants has now broadened to a diversity of automotive and industrial factories which represent the hub of Detroit's production might.

Factory, store and residential expansion in South Macomb sent building permits to an all-time high of \$60,000,000 in 1952, and the growth continues. Large tracts of land are at a premium.

In recent years so many production plants, large and small, have been erected in the Warren Township area that a complete list would be too lengthy for inclusion in this narrative. Some of these structures cost tens of millions of dollars.

Late in the spring of 1953 General Motors announced that its \$100,000,000 science and engineering plant—the General Motors Center—at 12-Mile and Mound, Warren Township, would be augmented with an estimated \$40,000,000 addition, making it the world's foremost automotive engineering center.

The "Hickory Township" of 1838, now Warren Township, today has an assessed valuation above \$118,077,795.

The establishment of Selfridge Field, Mount Clemens, as the home of the First Pursuit Group of the Army Air Corps in 1917 was the beginning of a modern day U.S. Air Force establishment second to none in strategic importance. It is now the nation's leading military center for jet-propelled fighter planes, and its widespread installations are valued in the tens of millions of dollars. It is a vital key in Uncle Sam's tactical fighter defense against inter-continental attack. Between 3,000 and 4,000 military personnel are covered by its annual \$15,000,000 payroll, most of which is spent within ten miles of the base.

Today, thanks to the well balanced combination of all factors in the urban-rural economy of Macomb County, there has developed a prosperous territory with an unofficial 1953 population of more than 227,437; an area growing daily with great expectations.

Its valuation is more than \$395,107,690. Its total annual county budget is in excess of \$2,592,-181. Its governmental and administrative functions are largely centered in the pretentious Macomb County Building, fully paid for, which today would cost far in excess of two million dollars to construct.

In the latter connection, three other current

public projects are viewed with pride by Macomb County:

(1) The Martha T. Berry Memorial Hospital for indigents, a fully modern, 100-bed structure, was opened in 1950. It is the state's most modern convalescent hospital. Built and equipped at a cost of approximately \$750,000 it was fully paid for on its completion date.

(2) The \$4,000,000 federal-aid Clinton River Spillway, running from Mount Clemens eastward to Lake St. Clair — for which the four-county district contributed \$1,063,000, is now a well-proven benefit.

From the fall of 1951 through 1952, U.S. engineers estimated that it had averted several major floods which would have wrought \$100,000 in damages.

The canal, adequately bridged where highways cross, is 200 feet wide, with a mean depth of 23 feet, and carries overflow water $2\frac{1}{4}$ miles to the lake at a maximum of 11,000 cubic feet per second. It has remained fully navigable and its now attractive revetments eventually will be landscaped, possibly as parks.

(3) In a once-useless, marshy area of Harrison Township, near Huron Pointe, the five-county Huron-Clinton Metropolitan Authority has constructed for public use a multi-million-dollar lakeshore development, the St. Clair Metropolitan Beach. It is a 550-acre landscaped area complete with modern buildings but with nature's beauty undisturbed. Its curving, sandy beach is 6,000 feet long, and 550 feet deep, the mammoth enterprise can provide recreation for 60,000 persons daily.

Progress has constantly spurred on both the governing bodies and the people of Macomb County, with improvement following improve-

ment despite changing economic conditions. The majestic County Building was conceived and completed in the throcs of a major depression.

A new County Jail with all the latest innovations, embodying a modern court room and chapel, was built at a cost of approximately one million dollars. It has a capacity of 132 prisoners and is so constructed that its capacity can be doubled and youthful and first offenders can be segregated from the more hardened type.

At the present time a Detention Home to cost in the neighborhood of \$250,000 is under construction and when completed will house Juveniles under the jurisdiction of the Probate Court.

An addition to the Martha T. Berry Hospital, to house contagious patients and to provide offices for the Health Department and the Agricultural Agent, is also under consideration at the present time.

Macomb County's land area, 481 square miles, is the home of 227,437 persons, according to a June, 1953, scientific estimate made by The Daily Monitor-Leader from a Detroit Edison meter survey, and a population of 284,000 is estimated by 1960.

This survey showed that an overall gain of 42,476 (more than 22 per cent) was registered since the 1950 federal census count of 184,961. The latter was a 71 per cent increase over the 1940 figure of 107,638.

The survey showed that 62 per cent of the 1953 population resides within the South Macomb area. The figures: North Macomb 85,773 and South Macomb 141,664.

Warren Township's huge population in June 1953 stood at 45,813 as compared to 42,653 in 1950 — a gain of 3,160 or 7 per cent.

TELEPHONE DIRECTORY COUNTY OFFICES

But the gains from 1950 to 1953 were larger elsewhere, as choice industrial and residential sites gradually became scarcer in Warren Township. Here are typical increases:

St. Clair Shores: 1950 - 19,823; June 1953 - 30,802; an increase of 52 per cent.

Roseville: 1950 - 15,816; June 1953 - 26,902; an increase of 73 per cent.

East Detroit: 1950 - 21,461; June 1953 - 24,779; an increase of 14 per cent.

The pattern of increase in 1953 over 1950 was a general one, even including the more stable North Macomb communities. Utica gained 33 per cent; Armada 31 per cent; Fraser 22 per cent; Chesterfield Township 42 per cent, and similar gains in adjacent areas.

Ample room for future expansion is assured by Macomb County's population density ratio of 472 people per square mile, as compared to Wayne County's 3,988 and Oakland's 449 in the same area.

Volumes could be written of the great wave of progress sweeping across the countryside where once the Wyandottes and the Chippewas camped, and to which came the Freuch pioneers and the Eastern settlers to carve homes from the wilderness.

Possibly this brief sketch, which scarcely raises the dust from history's rich records, will inspire further research by those to whom Macomb County is home.

—D. A.

| | | |
|-----------------------------------|----------|--------|
| Addressograph Department | HOWard | 8-5732 |
| Assignment Clerk | HOWard | 8-5841 |
| Bureau of Social Aid | HOWard | 3-8675 |
| Building Engineer | HOWard | 8-5521 |
| Circuit Court Commissioners | | |
| J. Russell LaBarge | PRescott | 7-0202 |
| Wm. Nunneley | HOWard | 8-6371 |
| Circuit Judges | | |
| Alton H. Noe | HOWard | 3-8696 |
| James E. Spier | HOWard | 8-5622 |
| Clerk - Judge Spier's Court | HOWard | 3-4414 |
| Civil Counsel | HOWard | 3-4549 |
| Court Officers | | |
| Edw. J. Harder | HOWard | 8-5622 |
| Clarence Shirey | HOWard | 8-6821 |
| Court Reporters | | |
| Daniel Moreno | HOWard | 3-8696 |
| Lorraine Nicholson | HOWard | 8-5622 |
| Coroner | | |
| Dr. Raymond G. Markle | HOWard | 8-8088 |
| Clifford H. Read | PRescott | 5-2200 |
| Juvenile Agent | HOWard | 3-1589 |
| Agricultural Agent | HOWard | 3-1539 |
| Clerk | HOWard | 8-5791 |
| Controller | HOWard | 8-6381 |
| Dog Warden | HOWard | 8-3739 |
| Farm | HOWard | 3-4541 |
| Health Department | HOWard | 3-1539 |
| Infirmary | HOWard | 3-4541 |
| Librarian | HOWard | 3-2335 |
| Sanitary Engineer | HOWard | 3-1559 |
| School Commissioner | HOWard | 3-4507 |
| Supt. of Nursing | HOWard | 3-1559 |
| Treasurer | HOWard | 3-0591 |
| Civil Defense | HOWard | 3-4596 |
| Drain Commissioner | HOWard | 8-4539 |

TELEPHONE DIRECTORY (Cont'd)

Driver's License Bureau HOward 8-4516
 Friend of Court HOward 8-5901
 Martha T. Berry Hospital HOward 3-4541
 Probate Judge HOward 3-0579
 Probate Registrar HOward 3-0579
 Probate Court (Juvenile Div.) HOward 3-1589
 Probation Officer HOward 3-0462
 Prosecuting Attorney HOward 3-0565,6,7
 Register of Deeds HOward 8-6961
 Road Commission HOward 8-4531
 Sheriff's Office HOward 8-4516
 Sheriff's Office (Warren Twp.) SLocum 7-9200
 Social Welfare Department HOward 8-4574
 Veterans' Counsel HOward 3-0852
 Radio Operator HOward 8-6951

* * *

City of Mount Clemens

City Manager HOward 3-8973
 Mayor HOward 8-5681
 Assessor HOward 3-0478
 Clerk HOward 8-5681
 Treasurer HOward 8-6881
 Water Department HOward 8-5801

City of Centerline

Clerk's Office SLocum 7-2990

City of East Detroit

Clerk's Office PRescott 5-7800

City of Memphis

Clerk's Office Memphis 19-R-2

City of New Baltimore

Clerk's Office RAYmond 5-2511

City of St. Clair Shores

Clerk's Office PRescott 6-7900

City of Utica

Clerk's Office REpublic 2-3922

TELEPHONE DIRECTORY (Cont'd)

Armada Township

Supervisor SState 4-8586
 Clerk SState 4-6061

Bruce Township

Supervisor PLateau 2-2742
 Clerk PLateau 2-2955

Chesterfield Township

Supervisor HOward 3-1414
 Clerk HOward 3-0116

Clinton Township

Supervisor PRescott 5-2757
 Clerk HOward 3-7095

Erin Township

Supervisor PRescott 5-1622
 Clerk PRescott 5-1622

Harrison Township

Supervisor HOward 3-9629
 Clerk HOward 8-5750

Lake Township

Supervisor TUXedo 4-3828
 Clerk TUXedo 4-4220

Lenox Township

Supervisor PIioneer 9-5834
 Clerk Richmond 123-R-3

Macomb Township

Supervisor SStillwell 1-7404
 Clerk SStillwell 1-2311

Ray Township

Supervisor PLateau 2-3448
 Clerk PLateau 2-2405

Richmond Township

Supervisor Richmond 1-F-3
 Clerk Richmond 73

TELEPHONE DIRECTORY (Cont'd)

| | |
|---------------------|------------------|
| Shelby Township | |
| Supervisor | REpublic 9-5962 |
| Clerk | REpublic 2-4891 |
| Sterling Township | |
| Supervisor | Warren 2324 |
| Clerk | REpublic 9-0203 |
| Warren Township | |
| Supervisor | SLocum 7-5100 |
| Clerk | SLocum 7-5100 |
| Washington Township | |
| Supervisor | PLateau 2-3394 |
| Clerk | STillwell 1-2728 |
| * * * | |
| Armada Village | |
| President | STate 4-6891 |
| Clerk | STate 4-6781 |
| Fraser Village | |
| President | PRescott 7-2700 |
| Clerk | PRescott 6-6420 |
| New Haven Village | |
| President | PIioneer 9-5304 |
| Clerk | PIioneer 9-5153 |
| Richmond Village | |
| President | Richmond 291 |
| Clerk | Richmond 125-R-2 |
| Romeo Village | |
| President | PLateau 2-2261 |
| Clerk | PLateau 2-3565 |
| Roseville Village | |
| President | PRescott 5-7718 |
| Clerk | PRescott 5-2800 |
| Warren Village | |
| President | Warren 3411 |
| Clerk | Warren 6471 |

Were half the power that fills the world
with terror,

Were half the wealth bestowed on camps
and courts,

Given to redeem the human mind from
error,

There were no need of arsenals or
forts.

(Longfellow)