

# 2021 Apportionment Plan Review



## **FORTON PLAN**

AMENDED 11-01-2021

Compiled by Macomb County Department of Planning and  
Economic Development



# **CONTENTS**

Macomb County Department of Planning and Economic Development Validation Summary	3
State of Michigan County Commissioner District Apportionment Tool Report	7
District Map	12

## **FORTON PLAN (AMENDED 11/1/2021) ANALYSIS**

Performed by Macomb County Department of Planning and Economic Development

### Methodology

Michigan Charter Counties Act 293 of 1966 MCL45.505(2)

*Each district shall be contiguous, compact, and as nearly square in shape as is practicable, depending on the geography of the county area involved, and shall be drawn without regard to partisan political advantage. Each city and township shall be apportioned so that it shall have the largest possible number of complete districts within its boundaries before any part of the city or township is joined to territory outside the boundaries of the city or township to form a district. Townships, villages, cities, and precincts shall be divided only if necessary to meet the population standard.*

United States Supreme Court 377 U.S. 633 (1964), 20 WMCA, Inc. v. Lomenzo

*Case set standard 11.9% population variance for districts*

### District Contiguosness

**All Districts are Contiguous**

## FORTON PLAN (AMENDED 11/1/2021) ANALYSIS

Performed by Macomb County Department of Planning and Economic Development

### Measure of District Population Variance

District Target Population: 67,682 (County Population 879,872\* / 13 Districts)

\* State of Michigan CCD Tool Population Total = 881,217 - 1,345 [SOM Macomb Correctional Facility pop.]

District	Total Population	Target Population	Variance	Variance %
District #1	67,549	67,682	-133	-0.197%
District #2	66,568	67,682	-1,114	-1.646%
District #3	66,136	67,682	-1,546	-2.284%
District #4	67,410	67,682	-272	-0.402%
District #5	67,157	67,682	-525	-0.776%
District #6	67,794	67,682	112	0.165%
District #7	69,285	67,682	1,603	2.368%
District #8	69,013	67,682	1,331	1.967%
District #9	66,564	67,682	-1,118	-1.652%
District #10	69,221	67,682	1,539	2.274%
District #11	69,652	67,682	1,970	2.911%
District #12	67,588	67,682	-94	-0.139%
District #13	65,935	67,682	-1,747	-2.581%
	<u>879,872</u>			

Maximum Allowable Variance: less than 11.99%

Permitted Plan Variance: 2.911% to -9.079%

Actual Plan Variance: 2.911% to -2.581%

**Plan Meets the 11.9% Standard**

# FORTON PLAN (AMENDED 11/1/2021) ANALYSIS

Performed by Macomb County Department of Planning and Economic Development

## Measure of Compactness

	Polsby-Popper Score
District #1	0.693 <b>Most Comp</b>
District #2	0.619
District #3	0.534
District #4	0.438
District #5	0.595
District #6	0.326 <b>Least Comp</b>
District #7	0.371
District #8	0.452
District #9	0.499
District #10	0.404
District #11	0.449
District #12	0.401
District #13	0.420

The Polsby–Popper test is a mathematical compactness measure of a shape developed to quantify the degree of gerrymandering of political districts. A district's Polsby–Popper score will always fall within the interval of 0-1, with a score of 0 indicating complete lack of compactness and a score of 1 indicating maximal compactness.

Formula:  $PP(D) = \frac{4\pi A(D)}{P(D)^2}$

A(D) = Area of District  
P(D) = Perimeter of District

### ANALYSIS

Mean (Avg)	0.477
Min	0.326
Max	0.693
Median	0.449
Std. Dev.	0.106 (Average distance from mean value)

# **FORTON PLAN (AMENDED 11/1/2021) ANALYSIS**

Performed by Macomb County Department of Planning and Economic Development

Analysis of Splits                      Total 7 splits

Cities

City of Eastpointe	1
City of Roseville	1
City of Sterling Heights	1
City of Warren	1

Townships

Clinton Township	1
Macomb Township	1
Shelby Township	1

Villages    0

Census VTD    0

**Section 1 – District Descriptions**

**District 1**

Armada Township

Bruce Township

Lenox Township

City of Memphis

Ray Township

City of Richmond

Richmond Township

Washington Township

**District 2**

Shelby Charter Township (part) / VTD(s): Shelby Twp 1, Shelby Twp 10, Shelby Twp 11, Shelby Twp 12, Shelby Twp 13, Shelby Twp 14, Shelby Twp 15, Shelby Twp 16, Shelby Twp 17, Shelby Twp 18, Shelby Twp 19, Shelby Twp 2, Shelby Twp 20, Shelby Twp 21, Shelby Twp 22, Shelby Twp 23, Shelby Twp 24, Shelby Twp 26, Shelby Twp 3, Shelby Twp 30, Shelby Twp 5, Shelby Twp 6, Shelby Twp 7, Shelby Twp 8, Shelby Twp 9

**District 3**

Macomb Township (part) / VTD(s): Macomb Twp 1, Macomb Twp 10, Macomb Twp 12, Macomb Twp 14, Macomb Twp 15, Macomb Twp 16, Macomb Twp 17, Macomb Twp 18, Macomb Twp 20, Macomb Twp 21, Macomb Twp 22, Macomb Twp 23, Macomb Twp 24, Macomb Twp 25, Macomb Twp 26, Macomb Twp 27, Macomb Twp 28, Macomb Twp 29, Macomb Twp 3, Macomb Twp 30, Macomb Twp 32, Macomb Twp 34, Macomb Twp 36, Macomb Twp 37, Macomb Twp 7, Macomb Twp 9

**District 4**

Chesterfield Township

Macomb Township (part) / VTD(s): Macomb Twp 11, Macomb Twp 2, Macomb Twp 31, Macomb Twp 35

## **Macomb County Reapportionment Plan 2021 - Forton Plan Amended 11-01-2021**

City of New Baltimore

### **District 5**

City of Sterling Heights (part) / VTD(s): Sterling Heights 1, Sterling Heights 13, Sterling Heights 14, Sterling Heights 15, Sterling Heights 16, Sterling Heights 17, Sterling Heights 2, Sterling Heights 22, Sterling Heights 23, Sterling Heights 24, Sterling Heights 25, Sterling Heights 31, Sterling Heights 32, Sterling Heights 33, Sterling Heights 34, Sterling Heights 35, Sterling Heights 43, Sterling Heights 44, Sterling Heights 45, Sterling Heights 7, Sterling Heights 8

### **District 6**

Macomb Township (part) / VTD(s): Macomb Twp 13, Macomb Twp 19, Macomb Twp 33, Macomb Twp 4, Macomb Twp 5, Macomb Twp 6, Macomb Twp 8

Shelby Charter Township (part) / VTD(s): Shelby Twp 25, Shelby Twp 27, Shelby Twp 28, Shelby Twp 29, Shelby Twp 4

City of Sterling Heights (part) / VTD(s): Sterling Heights 20, Sterling Heights 26, Sterling Heights 27, Sterling Heights 28, Sterling Heights 29, Sterling Heights 30, Sterling Heights 36, Sterling Heights 37, Sterling Heights 38, Sterling Heights 39, Sterling Heights 40, Sterling Heights 41, Sterling Heights 42

City of Utica

### **District 7**

Clinton Charter Township (part) / VTD(s): Clinton Twp 16, Clinton Twp 24, Clinton Twp 32

City of Fraser

City of Roseville (part) / VTD(s): Roseville 15, Roseville 2

City of Sterling Heights (part) / VTD(s): Sterling Heights 10, Sterling Heights 11, Sterling Heights 12, Sterling Heights 18, Sterling Heights 19, Sterling Heights 21, Sterling Heights 3, Sterling Heights 4, Sterling Heights 5, Sterling Heights 6, Sterling Heights 9

City of Warren (part) / VTD(s): Warren 4-33, Warren 4-50, Warren 4-58



## **Macomb County Reapportionment Plan 2021 - Forton Plan Amended 11-01-2021**

### **District 8**

Clinton Charter Township (part) / VTD(s): Clinton Twp 1, Clinton Twp 10, Clinton Twp 11, Clinton Twp 13, Clinton Twp 17, Clinton Twp 18, Clinton Twp 19, Clinton Twp 20, Clinton Twp 21, Clinton Twp 23, Clinton Twp 25, Clinton Twp 26, Clinton Twp 27, Clinton Twp 29, Clinton Twp 3, Clinton Twp 33, Clinton Twp 34, Clinton Twp 35, Clinton Twp 36, Clinton Twp 37, Clinton Twp 38, Clinton Twp 39, Clinton Twp 40, Clinton Twp 41, Clinton Twp 42, Clinton Twp 43, Clinton Twp 44, Clinton Twp 45, Clinton Twp 46

### **District 9**

Clinton Charter Township (part) / VTD(s): Clinton Twp 12, Clinton Twp 14, Clinton Twp 15, Clinton Twp 2, Clinton Twp 22, Clinton Twp 28, Clinton Twp 30, Clinton Twp 31, Clinton Twp 4, Clinton Twp 5, Clinton Twp 6, Clinton Twp 7, Clinton Twp 8, Clinton Twp 9

Harrison Charter Township

City of Mt Clemens

### **District 10**

City of Warren (part) / VTD(s): Warren 1-38, Warren 1-46, Warren 1-47, Warren 1-56, Warren 2-36, Warren 2-41, Warren 2-43, Warren 2-44, Warren 2-45, Warren 2-48, Warren 2-55, Warren 2-57, Warren 3-24, Warren 3-25, Warren 3-28, Warren 3-32, Warren 3-49, Warren 3-51, Warren 3-52, Warren 3-53, Warren 3-54, Warren 4-26, Warren 4-27, Warren 4-31, Warren 5-22

### **District 11**

City of Center Line

City of Warren (part) / VTD(s): Warren 1-1, Warren 1-19, Warren 1-34, Warren 1-5, Warren 1-6, Warren 2-20, Warren 2-35, Warren 3-10, Warren 3-11, Warren 3-14, Warren 4-15, Warren 4-17, Warren 5-12, Warren 5-13, Warren 5-18, Warren 5-23, Warren 5-3, Warren 5-4, Warren 5-7, Warren 5-8, Warren 5-9

### **District 12**

City of Eastpointe (part) / VTD(s): Eastpointe 1, Eastpointe 11, Eastpointe 12, Eastpointe 2, Eastpointe 3, Eastpointe 4, Eastpointe 5, Eastpointe 6, Eastpointe 7, Eastpointe 8

City of Roseville (part) / VTD(s): Roseville 1, Roseville 10, Roseville 11, Roseville 12, Roseville 13, Roseville 14, Roseville 3, Roseville 4, Roseville 5, Roseville 6, Roseville 7, Roseville 8, Roseville 9

# Macomb County Reapportionment Plan 2021 - Forton Plan Amended 11-01-2021

## District 13

City of Eastpointe (part) / VTD(s): Eastpointe 10, Eastpointe 13, Eastpointe 14, Eastpointe 9

City of St Clair Shores

City of The Village of Grosse Pointe Shores A Michigan City

## Section 2 – Data and Demographics

### Population

District Name	Total Population	Target Population	Variance	Variance %	Compactness Polsby Popper	Compactness Schwartzberg
District 1	67,549	67,682	-133	-0.197	0.693	0.832
District 10	69,221	67,682	1,539	2.273	0.404	0.636
District 11	69,652	67,682	1,970	2.910	0.449	0.670
District 12	67,588	67,682	-94	-0.140	0.401	0.633
District 13	65,935	67,682	-1,747	-2.582	0.420	0.648
District 2	66,568	67,682	-1,114	-1.647	0.619	0.787
District 3	66,136	67,682	-1,546	-2.285	0.534	0.731
District 4	67,410	67,682	-272	-0.403	0.438	0.662
District 5	67,157	67,682	-525	-0.776	0.595	0.771
District 6	67,794	67,682	112	0.165	0.326	0.571
District 7	69,285	67,682	1,603	2.368	0.371	0.609
District 8	69,013	67,682	1,331	1.966	0.452	0.673
District 9	66,564	67,682	-1,118	-1.653	0.499	0.706

### Race

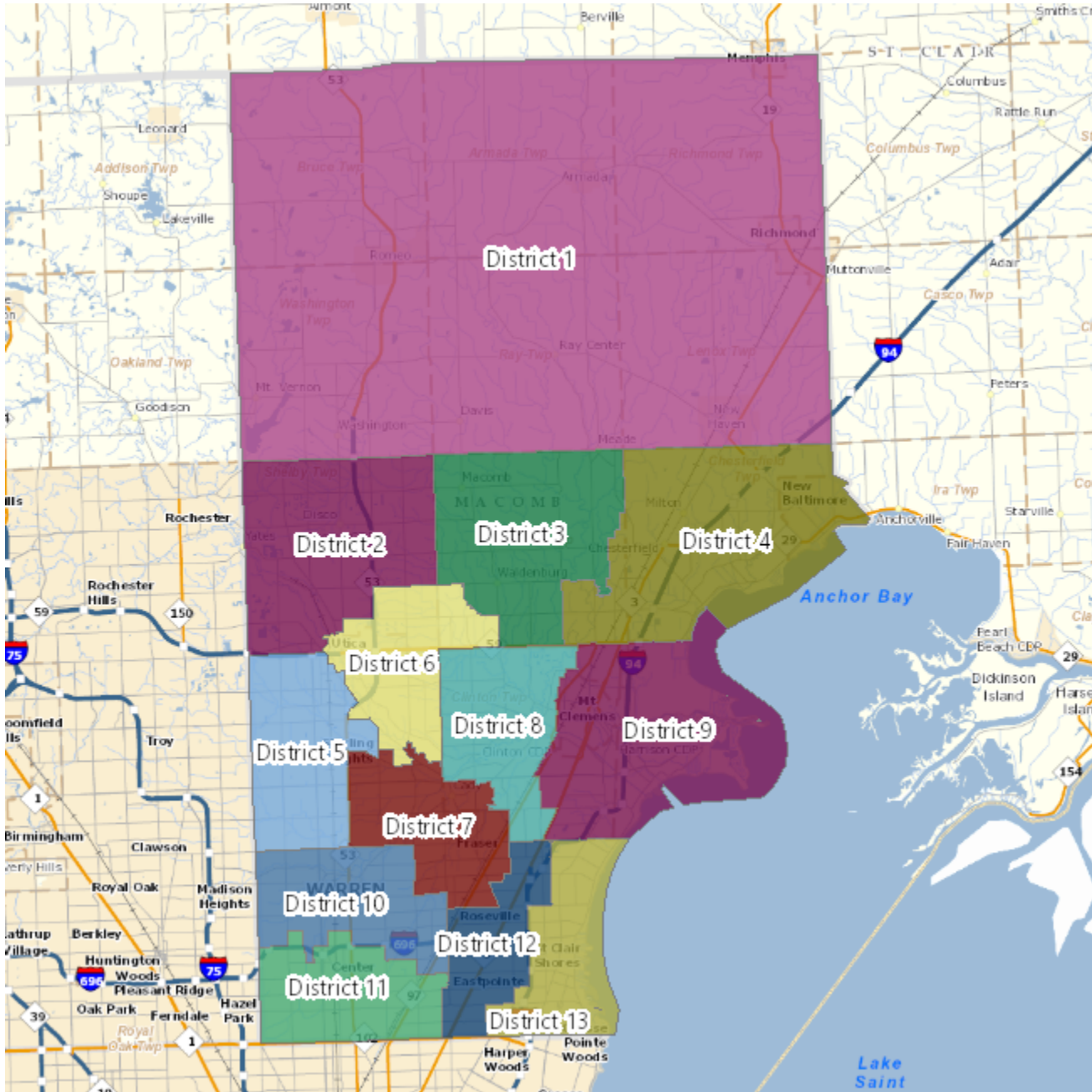
District Name	Total White Alone	Total Black Alone	Total American Indian And Alaskan Native Alone	Total Asian Alone	Total Native Hawaiian And Pacific Islander Alone	Total Other Alone
District 1	60,337	2,410	180	549	46	1,258
District 2	57,152	2,207	171	2,649	10	804
District 3	56,281	3,344	94	2,353	13	502
District 4	57,957	3,470	176	991	22	564

## Macomb County Reapportionment Plan 2021 - Forton Plan Amended 11-01-2021

District 5	52,763	3,728	133	7,129	8	525
District 6	57,114	3,653	109	2,722	14	654
District 7	53,179	8,297	182	3,391	13	467
District 8	53,333	9,356	149	1,654	18	678
District 9	46,574	13,961	222	766	17	810
District 10	48,292	9,574	153	7,394	4	489
District 11	36,983	19,751	284	7,058	29	920
District 12	39,251	21,805	220	1,093	16	640
District 13	53,048	7,920	152	672	19	514

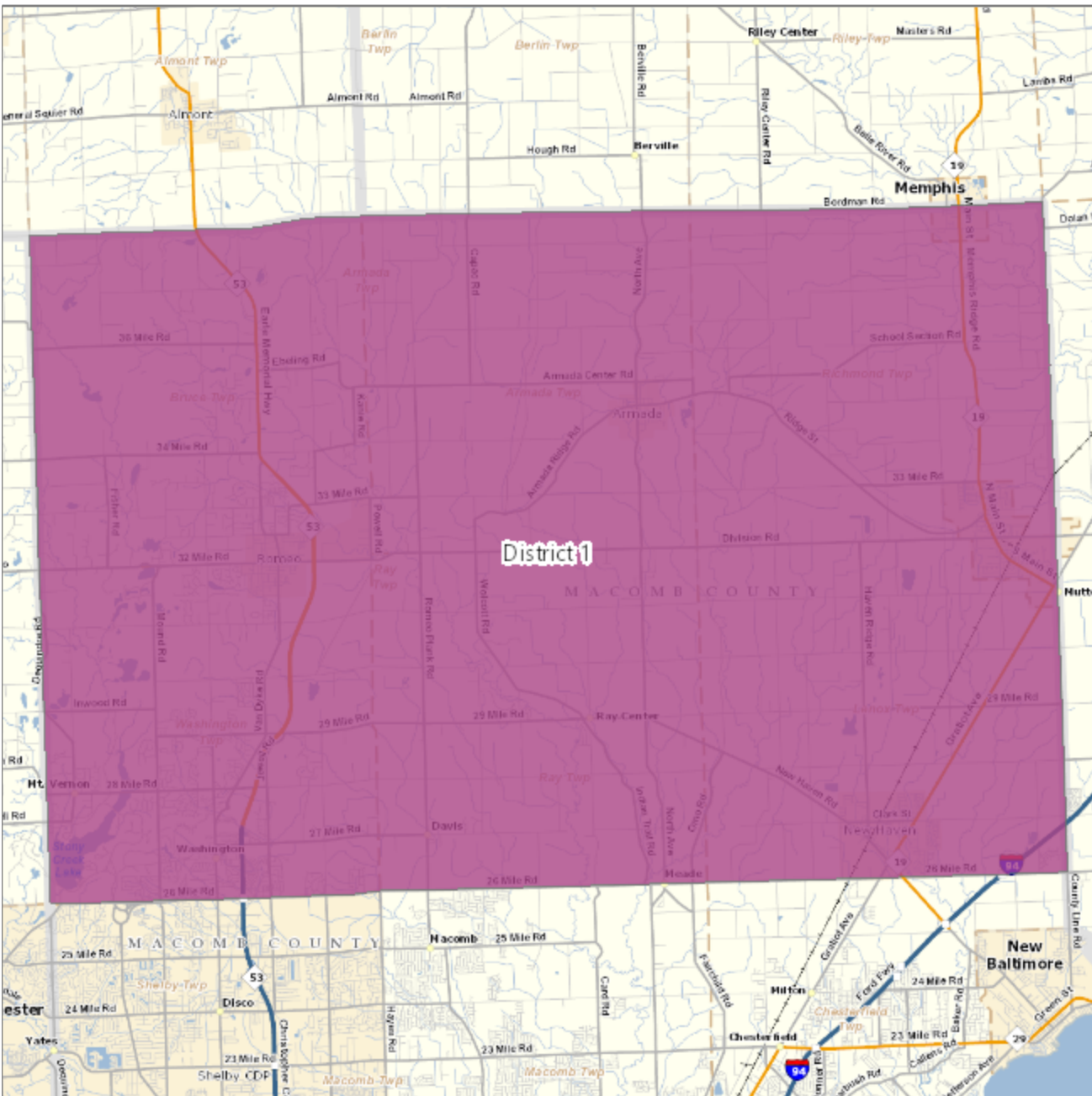
Section 3 – Maps

Macomb County District Map



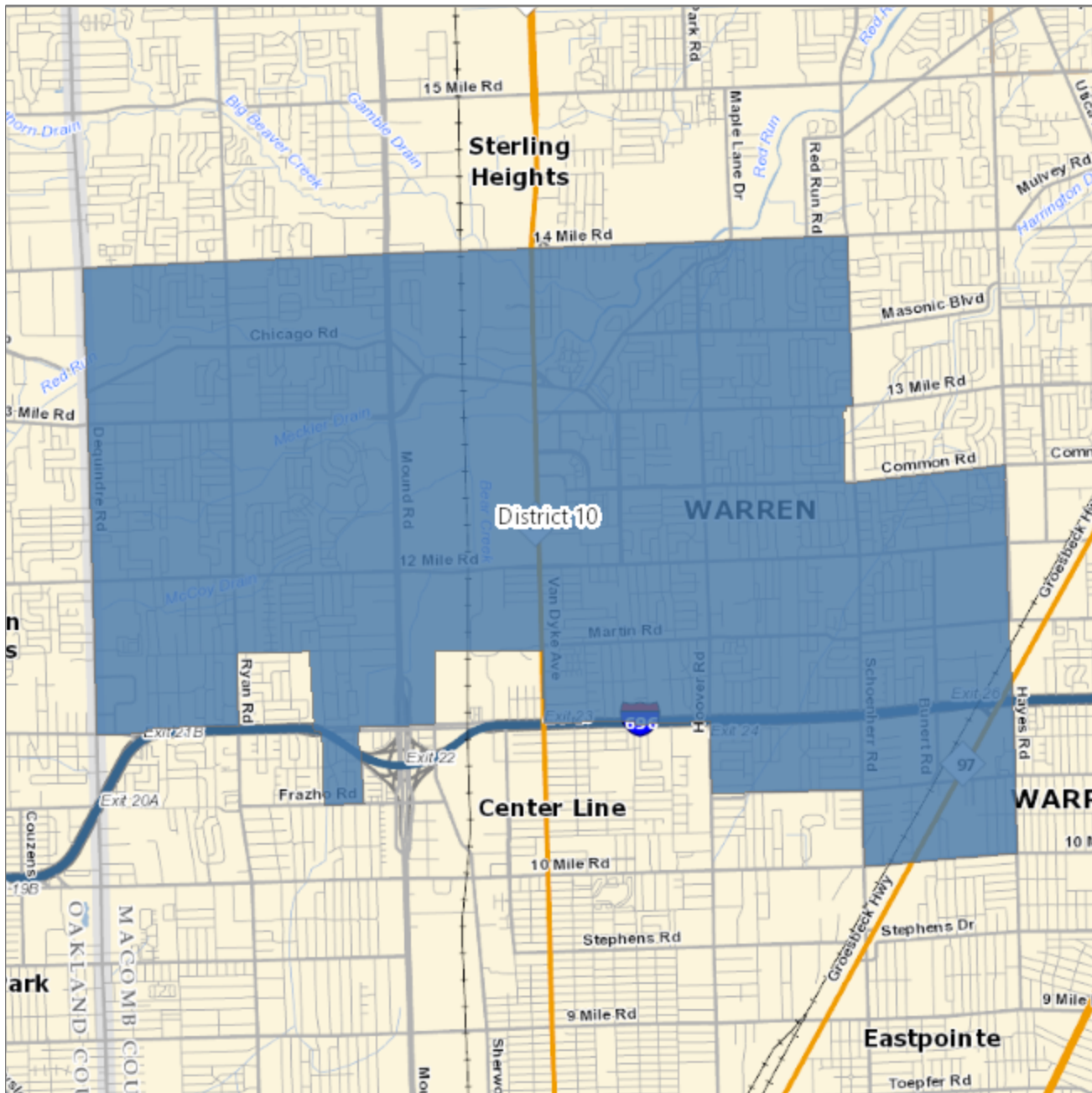
# Macomb County Reapportionment Plan 2021 - Forton Plan Amended 11-01-2021

District 1 - population 67,549



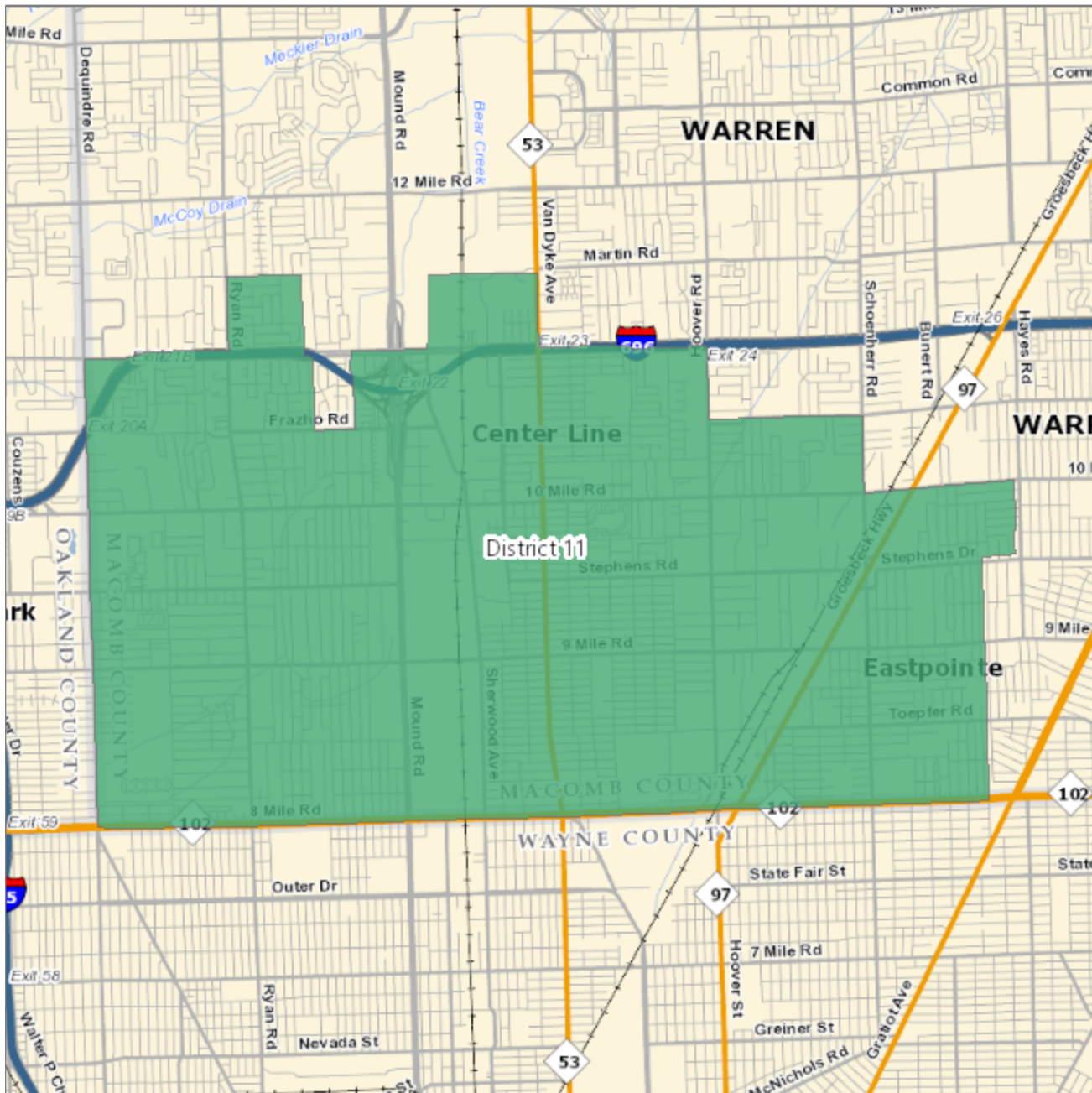
# Macomb County Reapportionment Plan 2021 - Forton Plan Amended 11-01-2021

District 10 - population 69,221



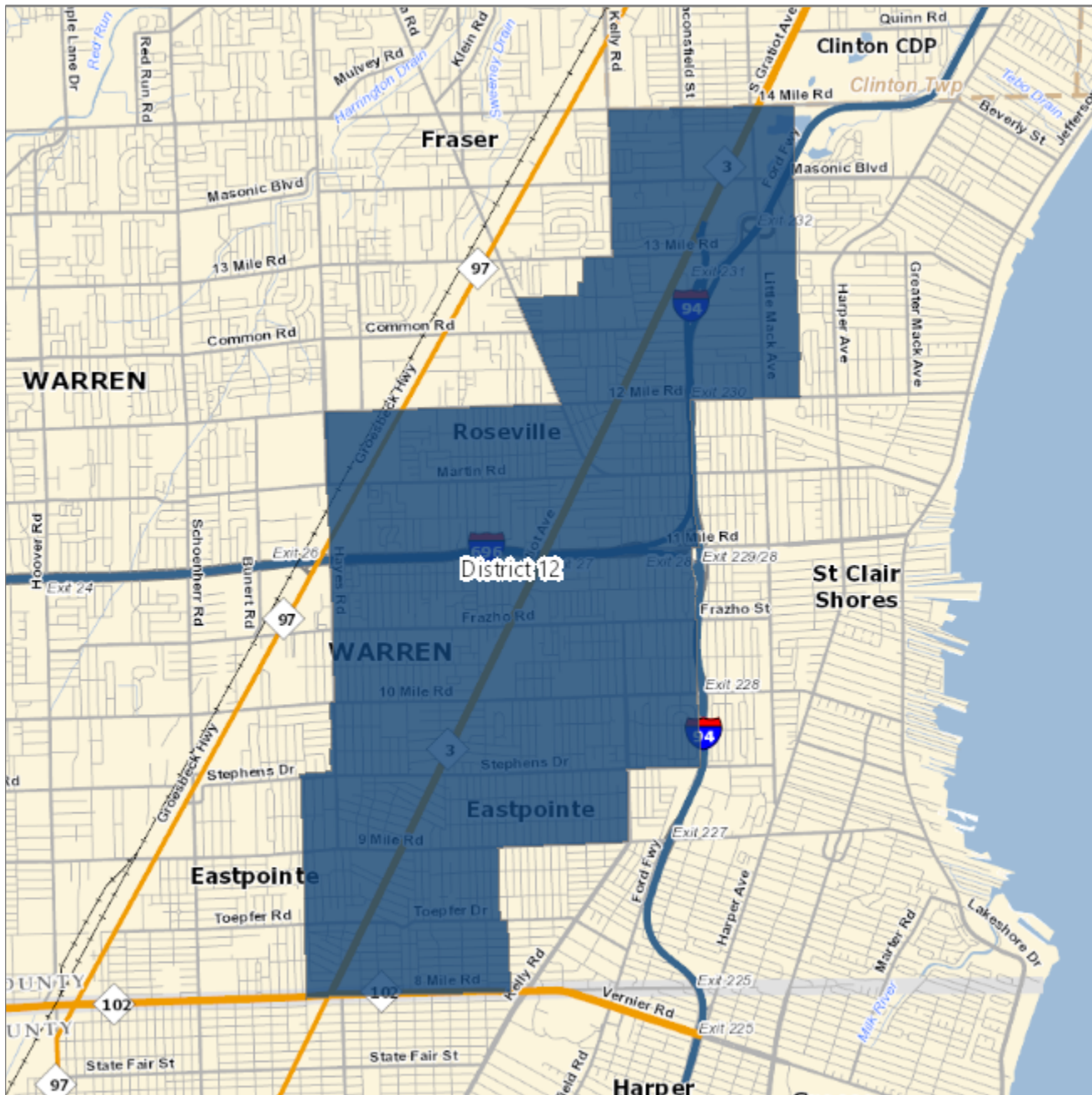
# Macomb County Reapportionment Plan 2021 - Forton Plan Amended 11-01-2021

District 11 - population 69,652



# Macomb County Reapportionment Plan 2021 - Forton Plan Amended 11-01-2021

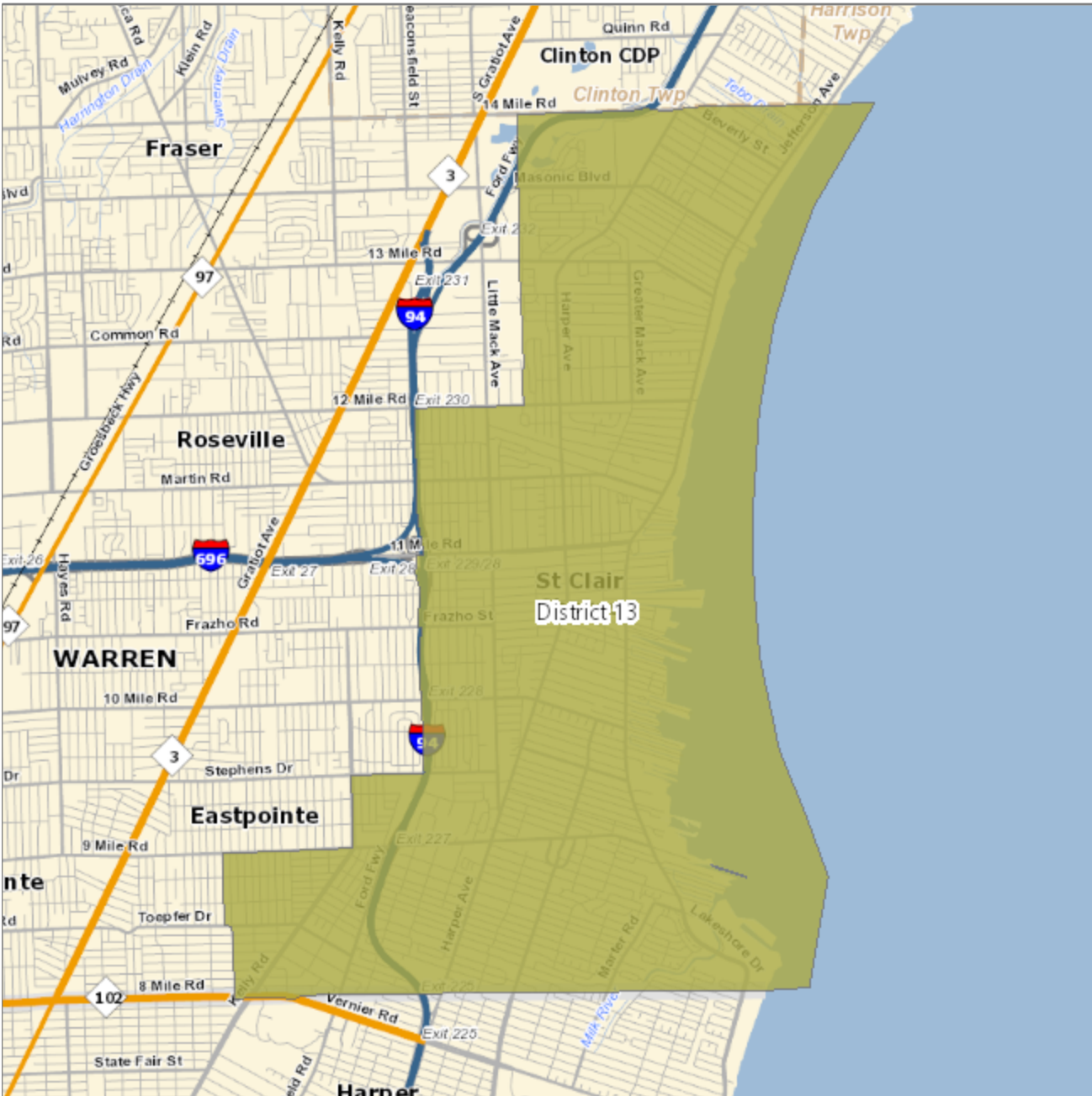
District 12 - population 67,588





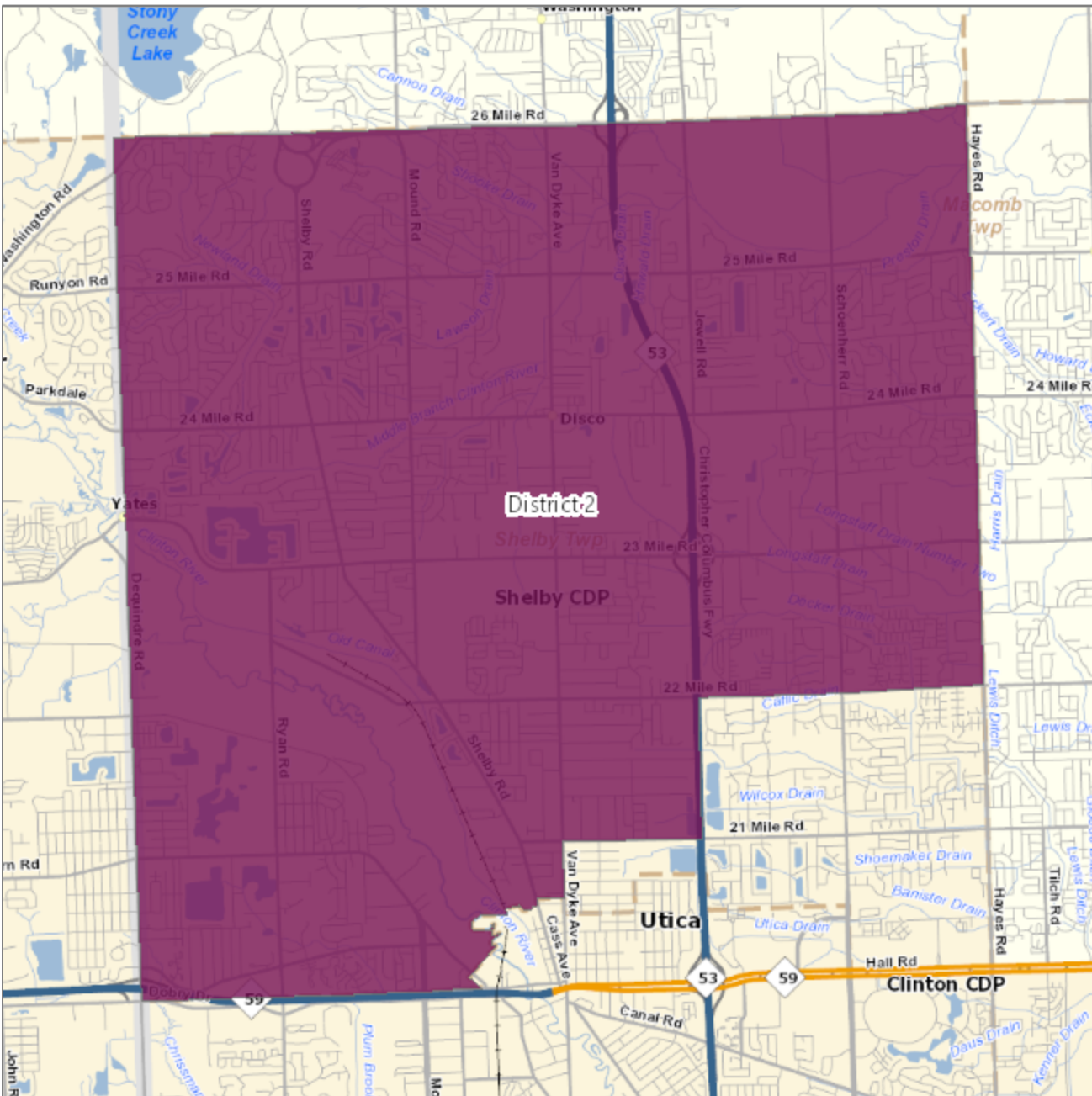
Macomb County Reapportionment Plan 2021 - Forton Plan Amended 11-01-2021

District 13 - population 65,935



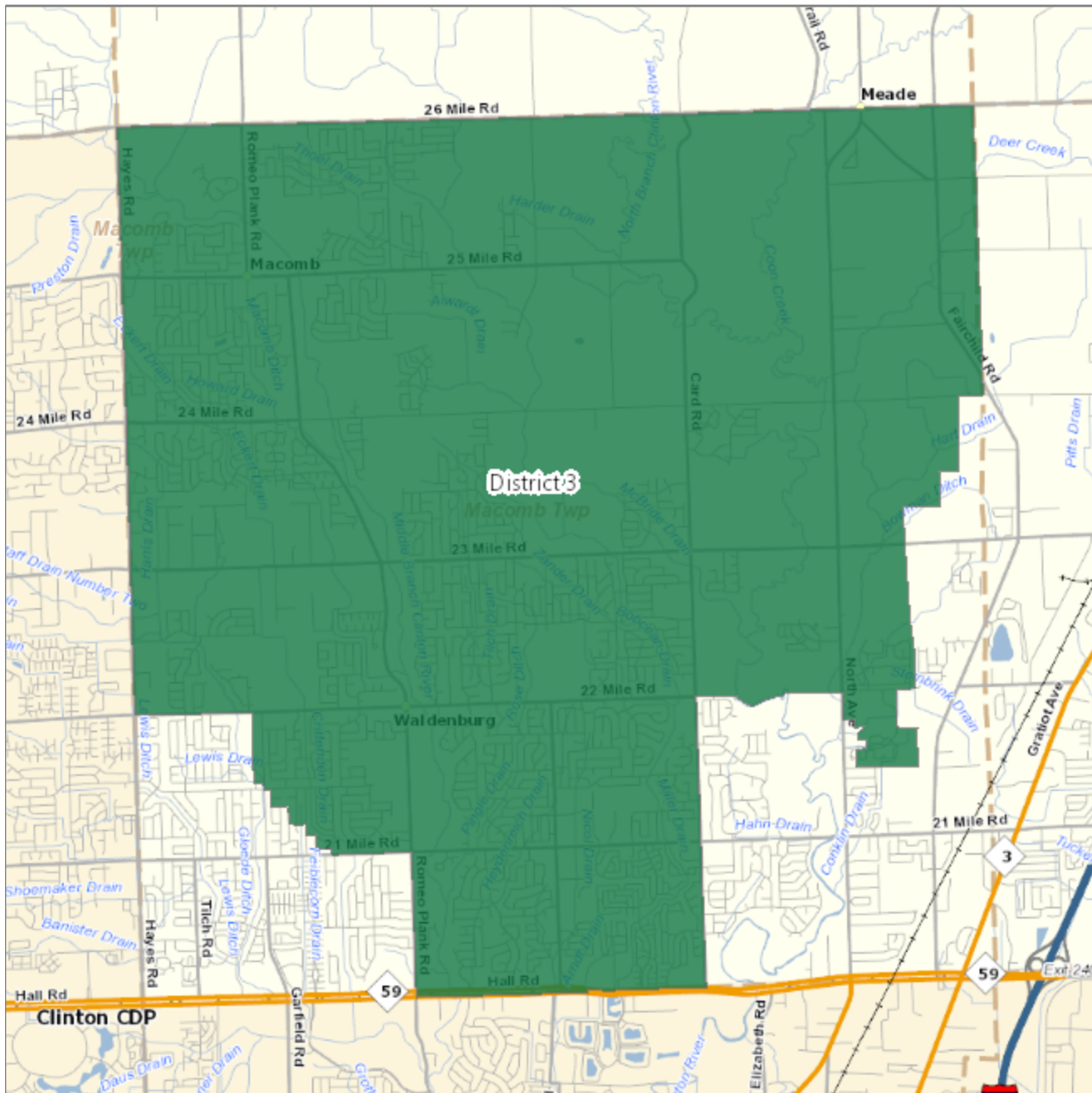
# Macomb County Reapportionment Plan 2021 - Forton Plan Amended 11-01-2021

District 2 - population 66,568



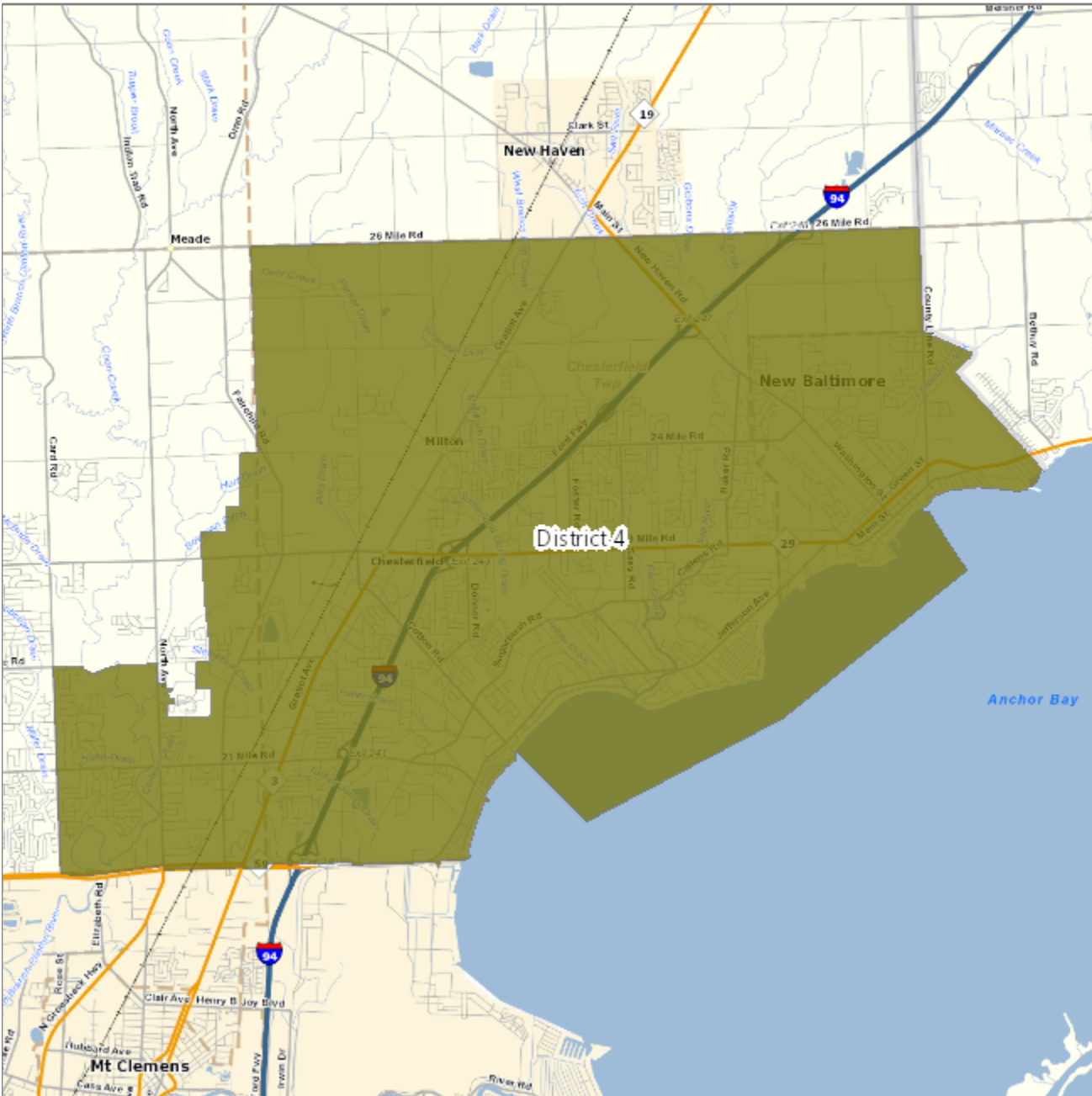
# Macomb County Reapportionment Plan 2021 - Forton Plan Amended 11-01-2021

District 3 - population 66,136



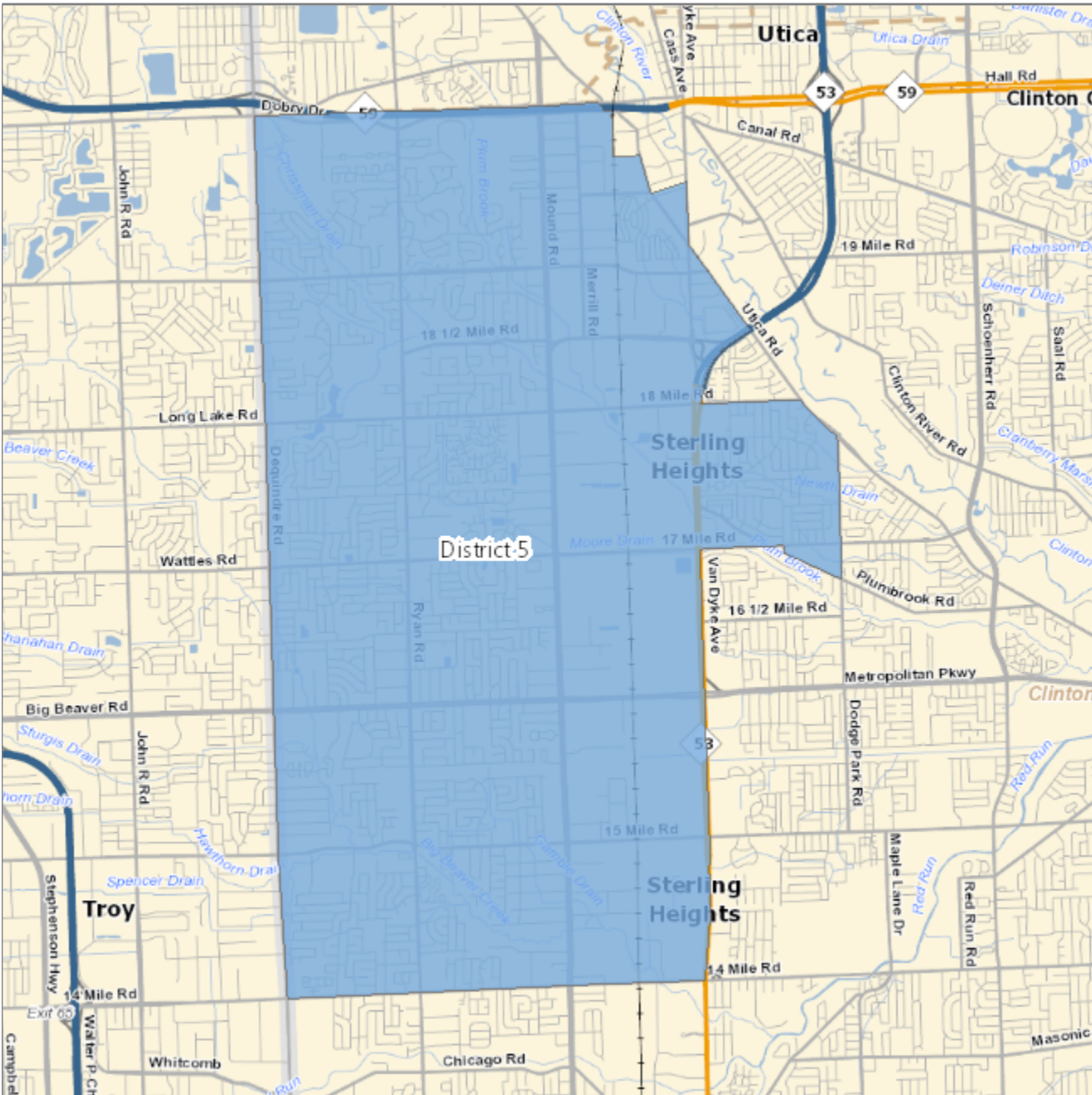
Macomb County Reapportionment Plan 2021 - Forton Plan Amended 11-01-2021

District 4 - population 67,410



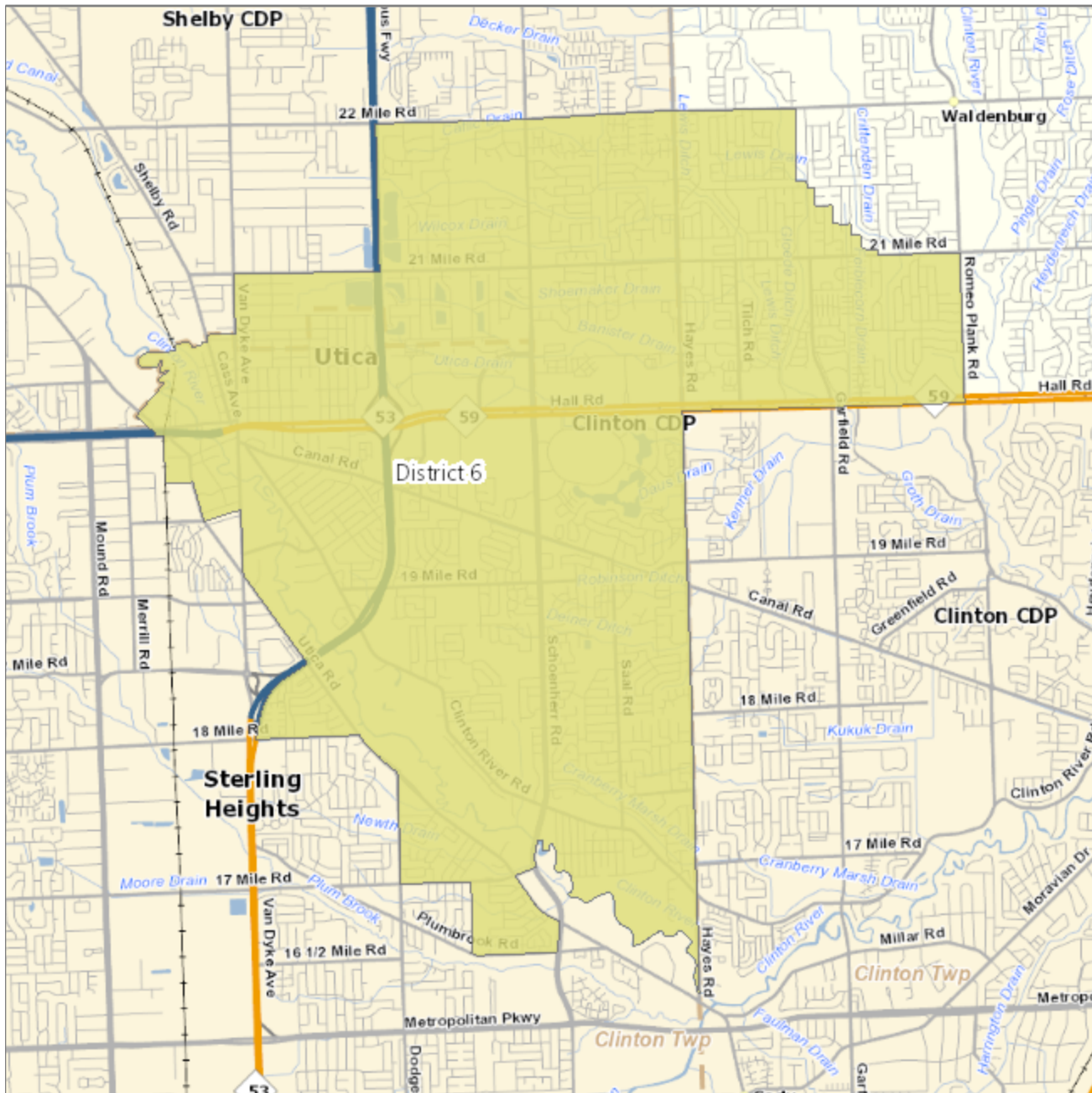
Macomb County Reapportionment Plan 2021 - Forton Plan Amended 11-01-2021

District 5 - population 67,157



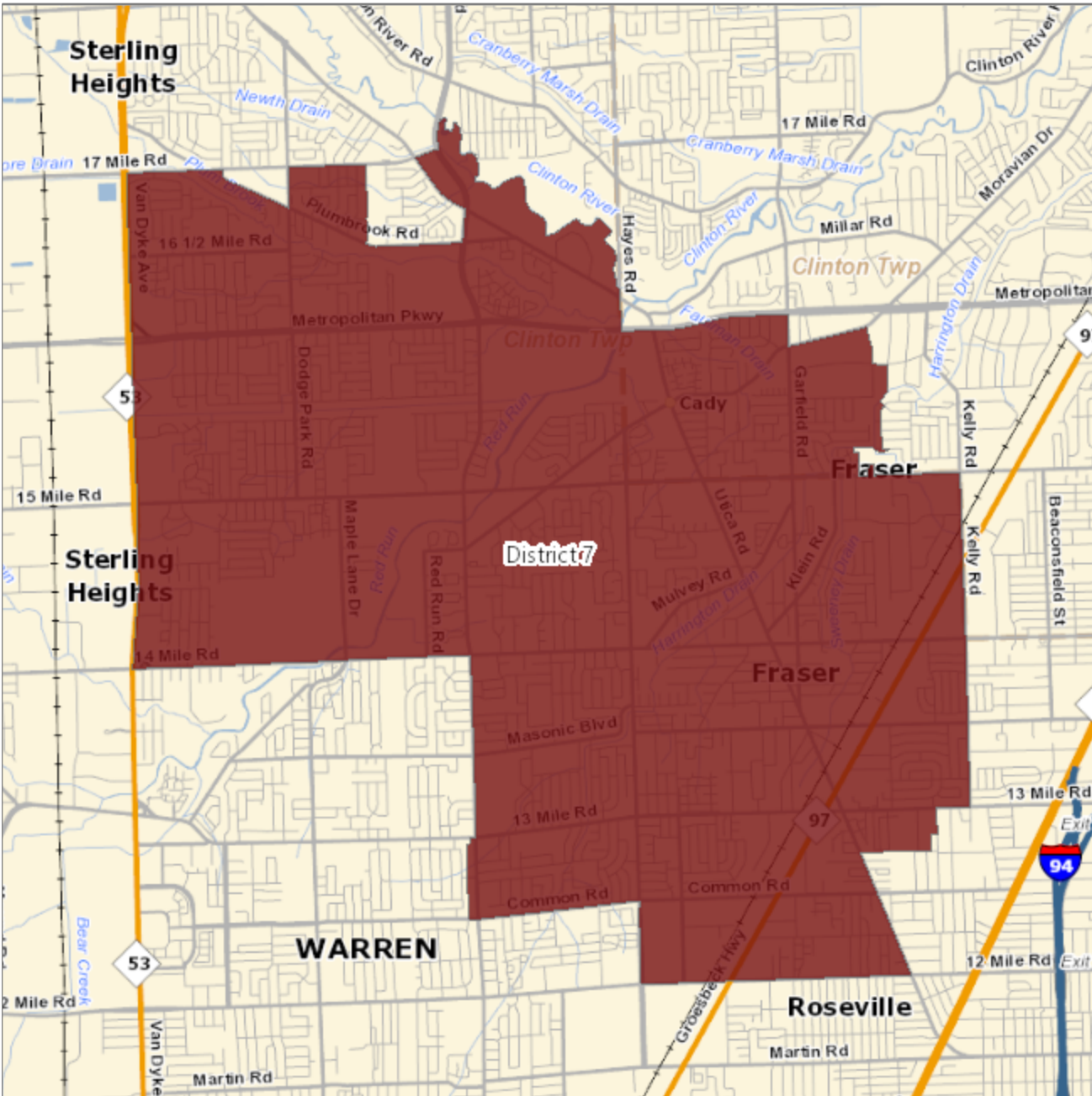
# Macomb County Reapportionment Plan 2021 - Forton Plan Amended 11-01-2021

District 6 - population 67,794



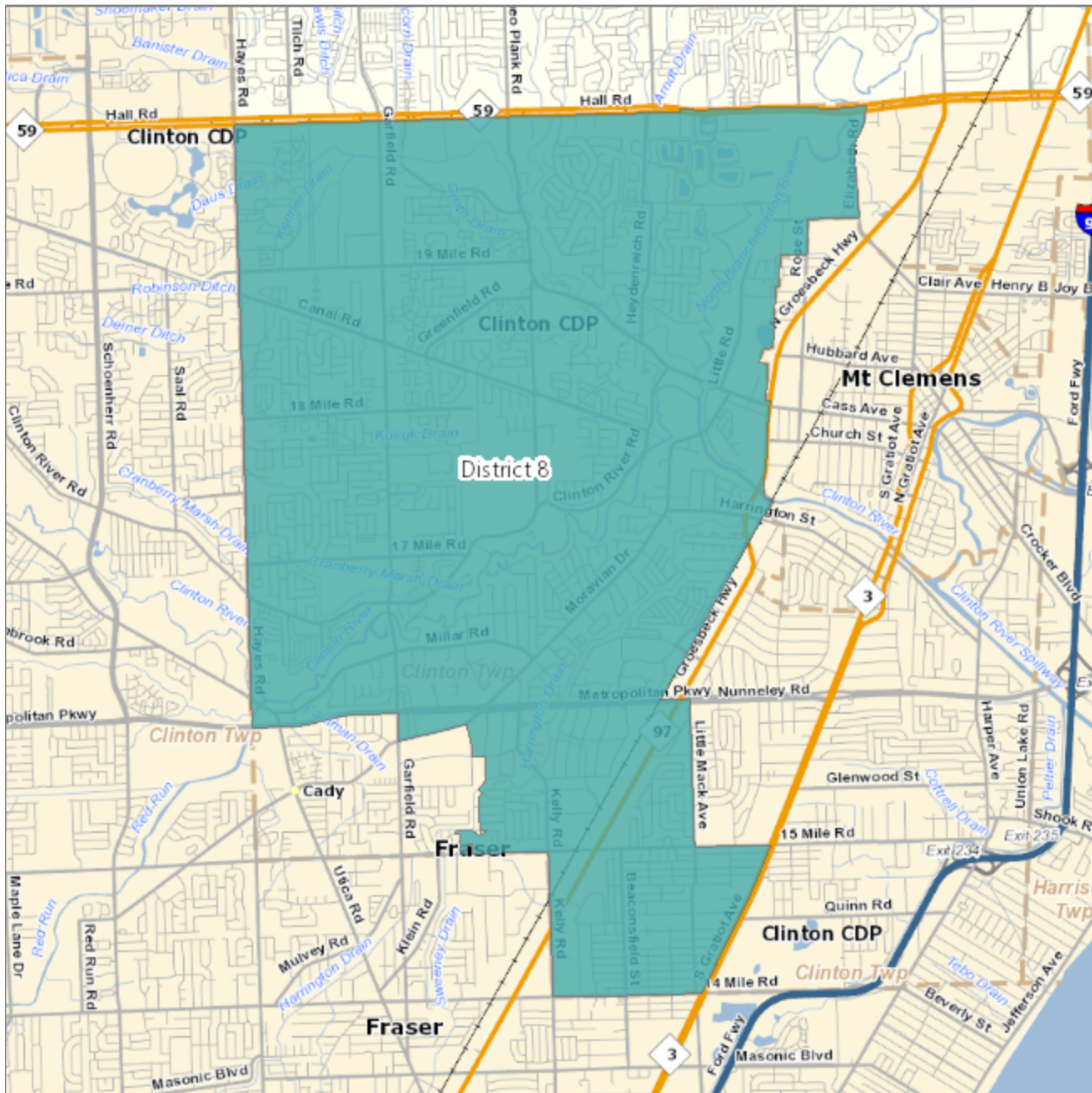
Macomb County Reapportionment Plan 2021 - Forton Plan Amended 11-01-2021

District 7 - population 69,285



# Macomb County Reapportionment Plan 2021 - Forton Plan Amended 11-01-2021

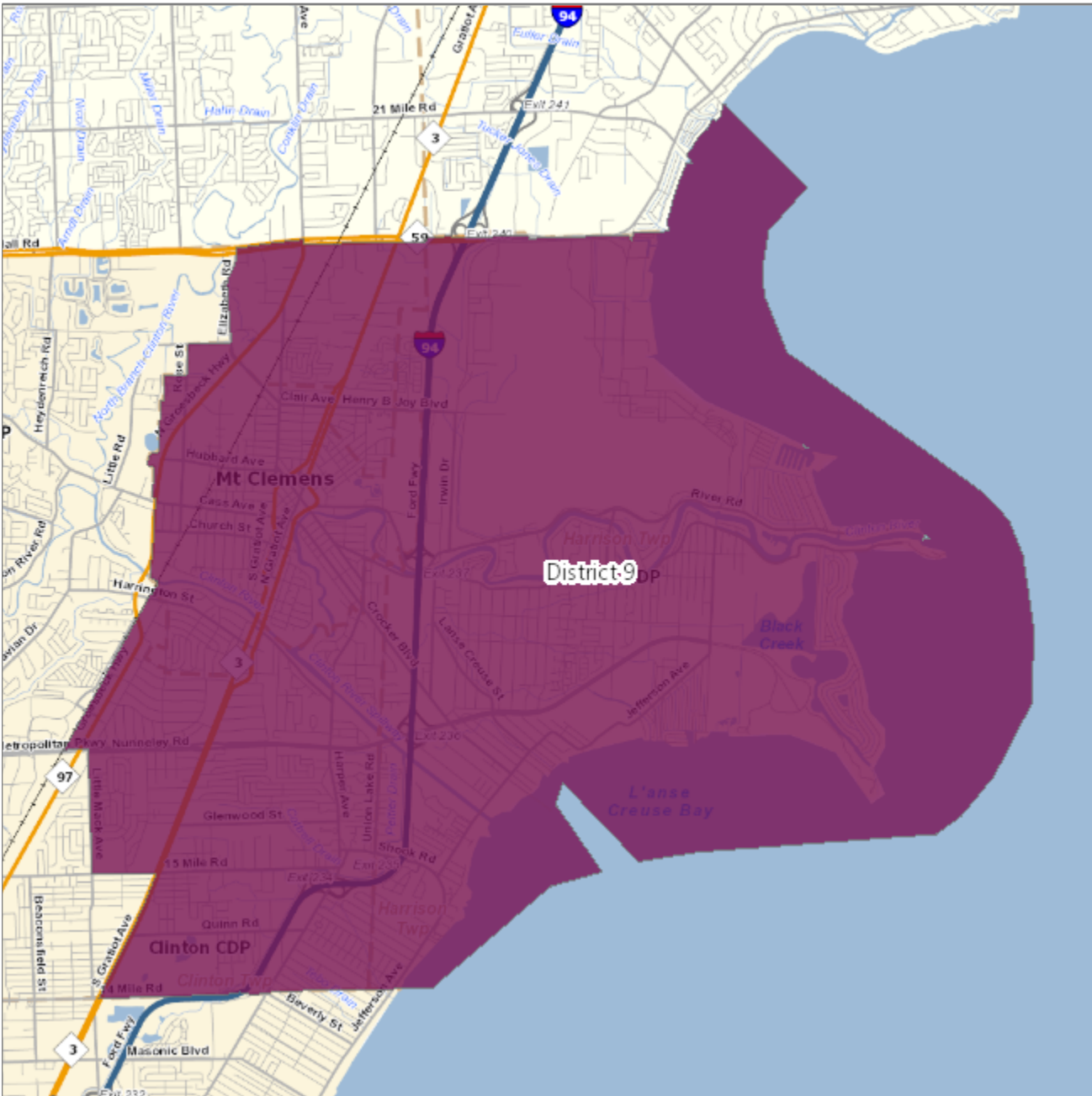
District 8 - population 69,013





**Macomb County Reapportionment Plan 2021 - Forton Plan Amended 11-01-2021**

District 9 - population 66,564



Total population all districts: 879,872

